



Coatings

*Waterproofing and
Heat Insulation
Systems*



Creates Permanent Solutions



www.akkim.net



* AKKIM has a right to amend the product information and images in this catalogue without notice.
Images and product properties may be different dependent on the target market or sales zone.

www.akfix.com • info@akfix.com



CREATES PERMANENT SOLUTIONS

EXPORTING TO MORE THAN
100+
COUNTRIES


450
DIFFERENT PRODUCTS


**EXPORT
CHAMPION**
OF TURKEY FOR
ADHESIVE & GLUES

Akfix®
■ MASTER OF SOLUTIONS ■

    /Akfixsealants

www.Akfix.com

CONTENTS



LIQUID
WATERPROOFING
MEMBRANES

06-17



FLOORING
ADHESIVES

18-28



EPOXY COATING
SYSTEMS

30-35



POLYUREA

36-45



RIGID
PU FOAMS

46-50



PRIMERS

52-55



JOINT
SEALANT & REPAIR

56-62



COATING SYSTEMS

WATERPROOFING
FLOORING
HEAT INSULATION

www.Akfix.com



COATINGS APPLICATION AREAS

1 Concrete Substrate

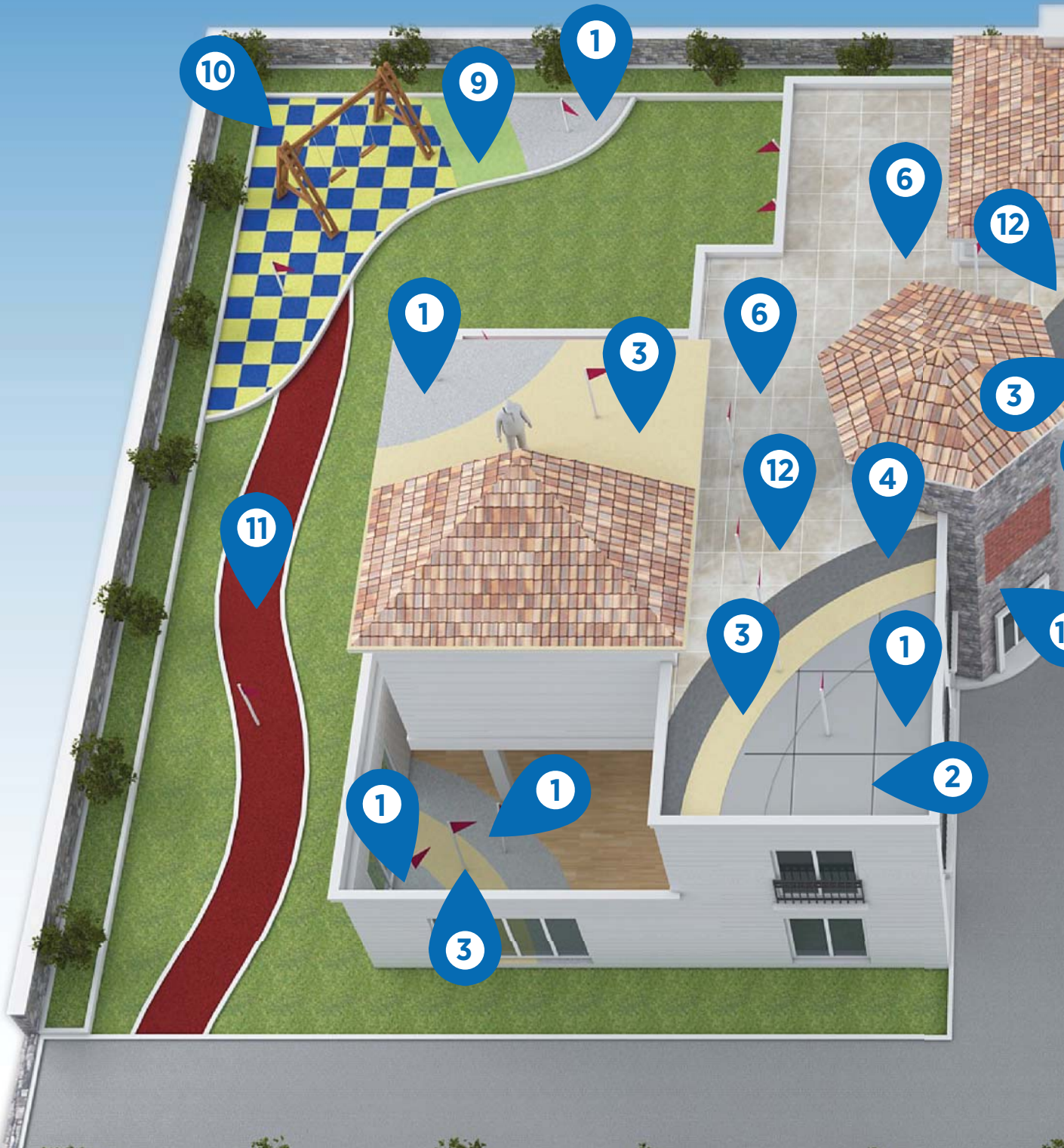
2 Joint Sealant Polyurea

3 Spray PU Foam

4 Polyurea

5 Base Coat Liquid Membrane

6 Polyaspartic Polyurea



7 Top Coat Liquid Membrane

8 Aliphatic Polyurea

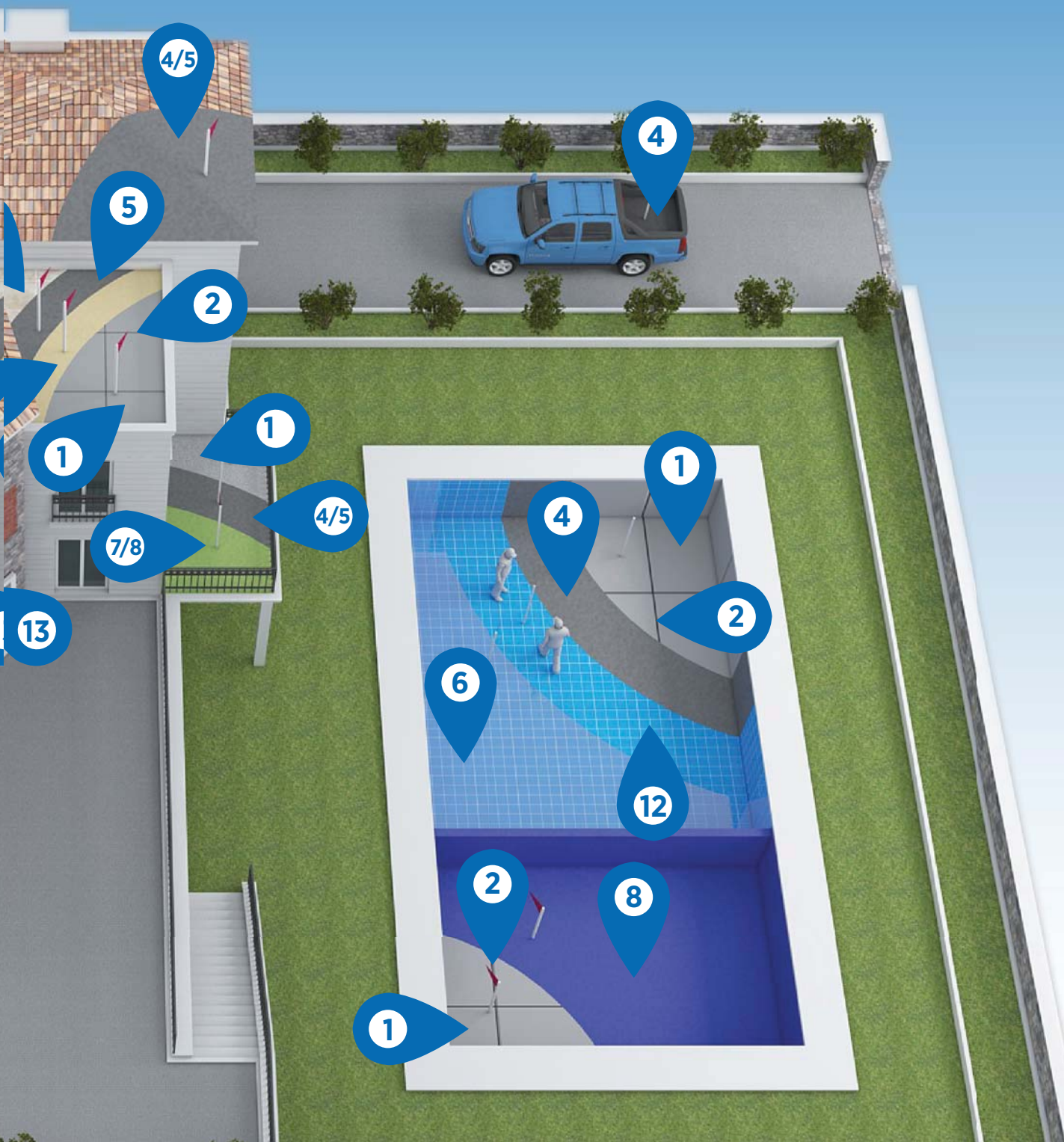
9 Rubber Tile Adhesive

10 Press Rubber Binder

11 Pour in Place Rubber Binder

12 Ceramic

13 PU Wood Imitation Panel





LIQUID WATERPROOFING MEMBRANES

www.Akfix.com





AQUAZERO

HYBRID WATERPROOFING MEMBRANE

Aquazero; is a premium, liquid and cold applied, one-component silane modified polymer (SMP) based polymer, elastic, waterproofing membrane, free of bitumen, solvent and isocyanates. After fully cured, it forms waterproof, UV resistant surface which also repairs the cracks up to 5mm.

**APPLICABLE
ON DAMP SURFACE**

**NO PRIMER
REQUIRED**

**FREE OF BITUMEN,
ISOCYNATES
AND SOLVENT**

After fully cured, it forms waterproof, UV resistant surface which also repairs the cracks up to 5mm.



TECHNICAL FEATURES

Base	: Hybrid Polymer	
Density (g/ml)	: 1,44 (ASTM D1875)	
Colour	: Grey/White	
Curing Rate (23°C %50 R.H.)	: 3,05 m/day	
Viscosity	: 10000-20000 cps	Brookfield DV-E RV 23°C Spindle No 05
Hardness (Shore A)	: 30 ± 5 ISO 868	
% Elongation	: Min. 300%	(DIN 53504)
Tensile Strength (N/mm2)	: 1-1,5 (DIN 53504)	
Application Temperature	: +5°C to +35°C	
Product Temperature	: +5°C to +25°C	
Temperature Resistance (Cured Product)	: -20°C to +80°C	



PACKAGE

Stock Code	Type	Volume	Box
WHM0105	Grey RAL7040	1 kg	12
WHM1405	Grey RAL7040	14 kg	1



CERTIFICATES



FEATURES

Applicable also on damp surfaces. Good resistance to UV, water and moisture. Self-leveling. Paintable. Applicable by brush, roller or a spatula. Provides water vapor permeability, allowing the surface to breathe. Environmental friendly - Free of bitumen, isocyanates and solvents.



APPLICATION AREAS

Protection, repair, restoration and waterproofing of the following surface and areas: Concrete floor slabs and roofs. Balconies and terraces. Small horizontal movement joints. As a flexible coating of roofs. Protection of Polyurethane Foam Insulation. Waterproofing of Wet Areas (under-tile) in bathrooms, kitchens, balconies, auxiliary rooms, etc.





EM600 / EM350

WATERGUARD ACRYLIC WATERPROOFING MEMBRANE

Acrylic Waterproofing Membrane is a one component, water based, acrylic copolymer based elastic waterproofing membrane.

**WATER
BASED**

**EXCELLENT
UV RESISTANCE**

**READY
TO USE**

Acrylic elastomeric roof coating
Easy Application





TECHNICAL FEATURES

EM600

Chemical Basis	: Acrylic copolymer
Solid Content	: %70-80
Density	: $1,37 \pm 0,03$ g / ml
Consistency / Color	: Liquid / White
Viscosity	: 50.000 \pm 5000 (Spindle No:6, 12rpm, 20°C)
Dry Time for Next Layer Application	: 4-5 hours (23°C, %50 R.H.)
Service Time	: 48 hours (23°C, %50 R.H.)
Consumption	: Horizontally 1,0-1,5 kg/m ² , vertically 0,75 kg/m ²
Elongation at Break	: $\geq 600\%$ (DIN 53504)
Tensile Strength	: >1 N/mm ² (DIN 53504)
Application Temperature	: +5°C ile +35°C
Ambient Temperature	: +5 °C ile +35°C

EM350

Chemical Basis	: Acrylic copolymer
Solid Content	: %70-80
Density	: $1,32 \pm 0,03$ g / ml
Consistency / Color	: Liquid / White
Viscosity	: 40.000-60.000 cp (20°C, No:05)
Dry Time for Next Layer Application	: 4-5 hours (23°C, %50 R.H.)
Service Time	: 48 hours (23°C, %50 R.H.)
Consumption	: Horizontally 1,0-1,5 kg/m ² , vertically 0,75 kg/m ²
Elongation at Break	: $\geq 350\%$ (DIN 53504)
Tensile Strength	: 0,5-1,0 N/mm ² (DIN 53504)
Application Temperature	: +5°C ile +35°C
Ambient Temperature	: +5 °C ile +35°C



PACKAGE

EM600

Stock Code	Type	Volume	Box
EM600	White	Net 5 kg	1
EM600.1	White	Net 20 kg	1

EM350

Stock Code	Type	Volume	Box
EM600	White	Net 5 kg	1
EM600.1	White	Net 20 kg	1



FEATURES

Ready to use. Can be easily applied with airless spray gun, roller or brush. Low labor cost. Does not contain solvent, can be diluted with water. Water vapor permeable. Resistant to UV. Maintains elasticity even at low temperatures. Over paintable. High opacity. Can be colored with water based color pastes. Seamless application.



APPLICATION AREAS

Waterproofing of;
Balconies, terraces and roofs. Facades. Wooden surfaces. Asphalt and bitumen floorings. Roofing details such as gutters, chimney edges etc.



CERTIFICATES



EN 1504-2





PUR 450


PU WATERPROOFING MEMBRANE

One part, easy to apply, specially formulated polyurethane based, elastic, crack bridging membrane. It cures to form a highly elastic, seamless, waterproof coating with excellent crack bridging properties. Its performance is maintained even at low temperatures.

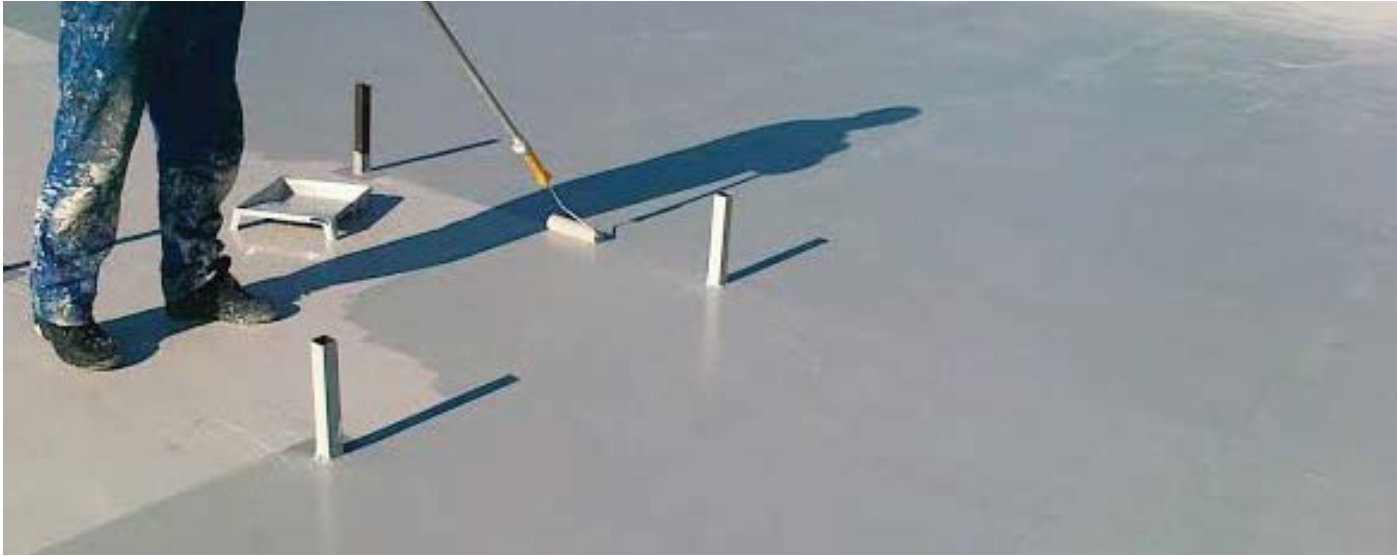
**EXCELLENT
ADHESION**

**HIGH
ELASTICITY**

**INTERIOR AND
EXTERIOR
APPLICATIONS**



It cures to form a highly elastic, seamless, waterproof coating with excellent crack bridging properties.



TECHNICAL FEATURES

Chemical Base	: Solvent Base Polyurethane
Density	: 1.35 ± 0.03 gr/ml (ASTM D1875)
Appearance/Color	: Liquid, White or Grey Colors
Surface Curing	: 3 h (23°C and %50 R.H.) (ASTM C679)
Viscosity	: 5000-10000 cps
Ready for foot traffic*	: 24-36 h (23°C and %50 R.H.) (ASTM C679)
Full Cure	: 7 days (23°C and %50 R.H.)
Shore A Hardness	: 60±5 (ASTM D 2240)
% Elongation	: ≥ % 450 (DIN EN ISO 527)
Solid Content	: Weight -% 84 (23°C and %50 R.H.)
Tensile Strength	: 3 N/mm ² (DIN 53504)
Heat Resistance	: -20°C and +80°C
Application Temperature	: +5°C and +35°C



FEATURES

Excellent Adhesion. Easy application. May be applied interior and exterior areas. Crack Bridging. Highly elastic. Economical in use. Silk/ matt appearance. Root penetration resistant



APPLICATION AREAS

Seamless coating on roofs and concrete structures, which can also be used as a waterproofing membrane on non-trafficked areas. Not suitable for permanent water immersion. Can be applied on concrete, brickwork, asbestos cement, roof tiles, roofing felt etc. For areas with specific official performance requirements, please contact us for product selection.



PACKAGE

Stock Code	Type	Volume	Box
WMB452502	White (Metal Pail)	Net 25 kg	1
WMB452506	Grey (Metal Pail)	Net 25 kg	1
WMB450102	White	Net 1 kg	1
WMB450106	Grey	Net 1 kg	1



CERTIFICATES



**BUBBLE
FREE
CURING**

**EXCELLENT
ADHESION**

**SUPERIOR UV
RESISTANCE**



T525

PU TOPCOAT WATERPROOFING MEMBRANE

One component, aliphatic polyurethane based coating material with high permanent elasticity, superior UV resistance, color stability and easy-to-clean surface. It has a special curing system (triggered by the moisture) and does not create bubbles during curing.



TECHNICAL FEATURES

COLORED

Chemical Base	: Polyurethane
Density	: 1,30 ± 0.03 gr/ml (ASTM D1875)
Apperance/Color	: Liquid, White or Grey Colors
Surface Curing	: 3-5 hrs (23°C and %50 R.H.) (ASTM C679)
Ready for foot traffic*	: 24-36 hrs (23°C and %50 R.H.) (ASTM C679)
Full Cure	: 7 days (23°C and %50 R.H.)
Shore A Hardness	: 60±5 (ASTM D 2240)
% Elongation	: ≥ % 350 (DIN EN ISO 527)
Solid Content	: Weight - % 85 (23°C and %50 R.H.)
Heat Resistance	: -20°C and +80°C
Application Temperature	: +5 °C and +35 °C

* With Care. Only for inspection or for application of the next layer, not for permanent traffic.

TRANSPARENT

Chemical Base	: Solvent Based Polyurethane
Density	: 1.00 ± 0.03 gr/ml (ASTM D1875)
Appearance/Color	: Liquid, Clear
Surface Curing Time	: 8-12 hrs (23°C and %50 R.H.) (ASTM C679)
Reafy for foot Traffic*	: 24-36 hrs (23°C and %50 R.H.) (ASTM C679)
Full Cure	: 7 days (23°C and %50 R.H.)
Shore A Hardness	: 60 (ASTM D 2240)
Elongation %	: ≥ % 250 (DIN EN ISO 527)
Heat Resistance	: -20°C and +80 °C
Application Temperature	: +5 °C and +35 °C

* With Care. Only for inspection or for application of the next layer, not for permanent traffic.



PACKAGE

Stock Code	Type	Volume	Box
WMBT521500	Transparent	Net 15 kg	1
WMBT521500	Light Grey RAL7035	Net 15 kg	1
WMBT521500	White RAL9010	Net 15 kg	1



CERTIFICATES



EN 1504-2



FEATURES

Excellent adhesion properties. Excellent resistance to abrasion and wear. Prevents color fading and dust formation likely to occur on polyurethane waterproofing materials. Easy application (by roller and airless gun). Forms bright and easy-to-clean surface. UV resistant. Over-walk able after application (light pedestrian traffic). Impervious to water and deicing salts. Uniform structure without any connection edges.



APPLICATION AREAS

It is used as a topcoat on polyurethane-based waterproofing materials for protecting waterproofing, giving a decorative appearance to the surface, maintaining brightness of the surface and preventing dust formation.



**ALLOWS
SUBSTRATES
TO BREATHE**

**BONDS TO
MULTIPLE
MATERIALS**

**NO PRIMER
REQUIRED**



HB400

WATERGUARD LIQUID FLASHING HYBRID

Liquid Flashing Hybrid is a hybrid polymer based, an all-purpose, fluid applied flashing used to create a weather resistant, fully adhered waterproof barrier system around window and door installations.



TECHNICAL FEATURES

Basis	: Hybrid Polymer
Curing Mechanism	: Moisture
Density	: 1,46 ± 0,03 g / ml
Consistency / Color	: Viscous liquid / Blue
Hardness Shore A	: 35-40 (ISO 868)
Viscosity	: 80.000-140.000 cps (Spindle 07, Brookfield)
Skin Formation Time	: 50 ± 5 min (23°C, 50% R.H.)
Curing Performance	: Min.2,5 mm/24h (23°C, 50% R.H.)
Elongation at Break	: ≥ 250% (DIN 53504)
Tensile Strength	: 1,6-2,1 N/mm² (DIN 53504)
Application Temperature	: +5°C to +40°C
Temperature Resistance	: -40 °C to +90°C



FEATURES

Does not contain solvent, silicone, bitumen or isocyanate. Easy to use trowel application. No mixing needed and primer required. Water and frost resistant. Allows substrates to breathe. Bonds to multiple materials. Can be applied damp surface. Prevents membrane wear and tear. Low labor cost.



APPLICATION AREAS

Indoor and outdoor. Vertical and horizontal surfaces. Surface restoration of old substrates. Foundations, basements and garages. Bathroom and wet floors.



PACKAGE

Stock Code	Type	Volume	Box
HB400	Grey RAL7040	600 ml	12
HB400.1	Grey RAL7040	Net 1 kg	12
HB400.2	Grey RAL7040	Net 14 kg	1





HB420

WATERGUARD HYBRID ROOF DETAIL

Hybrid Roof Detail is a hybrid polymer based liquid flashing compounds for waterproofing of complex roofing details and connections such as pipes, chimneys, lightdomes, gutters etc.

**NO PRIMER
REQUIRED**

**PROVIDES
WATER VAPOR
PERMEABILITY**

**EFFICIENT
APPLICATION ON
COMPLEX DETAILS**

After fully cured, it forms waterproof, UV resistant surface which also repairs the cracks up to 5mm.





TECHNICAL FEATURES

Chemical Base	: Hybrid Polymer
Curing Mechanism	: Moisture
Density	: 1,46 ± 0,03 g / ml
Consistency / Color	: Viscous liquid / White, Grey, Black
Hardness Shore A	: 35±5 (ISO 868)
Viscosity	: 80.000-120.000 cps (Spindle 07, Brookfield)
Skin Formation Time	: 40-60 min (23°C, 50% R.H.)
Curing Performance	: Min.2,5 mm/24h (23°C, 50% R.H.)
Elongation at Break	: ≥ 250% (DIN 53504)
Tensile Strength	: 1,5-2,0 N/mm² (DIN 53504)
Application Temperature	: +5°C to +40°C
Temperature Resistance	: -40 °C to +90°C



FEATURES

Does not contain solvent, silicone, bitumen or isocyanate. Simple application. Forms seamless membrane without joints or leak possibilities. Water and frost resistant. Provides water vapor permeability. Full surface adherence without any additional anchoring. Can be applied damp surface. In case of damage, membrane can be easily repaired locally within minutes. Low labor cost.



APPLICATION AREAS

The Roof Detail Hybrid is mainly used to waterproof details like;

- Pipes • Flashings and 90° angles • Lightdomes • Chimneys
- Wall-floor connections • Roofing and gutters
- Photovoltaic systems • Concrete, mortar, cement screed, wood etc.



PACKAGE

Stock Code	Type	Volume	Box
HB420	Grey RAL7040	Net 1 kg	12
HB420.1	Grey RAL7040	Net 7 kg	2
HB420.2	Grey RAL7040	Net 14 kg	1





FLOORING **ADHESIVES**

www.Akfix.com







FL205

VINYL/PVC FLOORING ADHESIVE

Akfix FL205 PVC Flooring Adhesive is a one part, water borne acrylic based adhesive that is used for adhesion of PVC/Vinyl floorings and tiles, heterogeneous PVC, expanded vinyl, semi-flexible floor tiles and felt-backed carpets to the floor.

**STRONG
INITIAL
ADHESION**

**STABLE &
ELASTIC
ADHESIVE**

**LONG
OPEN TIME**

Universal PVC flooring adhesive.
Long open time.
Strong initial adhesion power.



TECHNICAL FEATURES

Chemical Base	: Acrylic Dispersion
Density	: 1.44 ± 0.03 g/ml
Color	: Grey
Waiting Time	: 5-10 min. (20°C and 50% R.H.)
Working Duration	: 35-45 min. (20°C and 50% R.H.)
Set to Traffic	: 18-48 h (20°C and 50% R.H.)
Full Setting	: 48 h
Application Temperature	: +5°C to +35°C



FEATURES

Single component, no mixing required. Solvent-free, very low emissions. Easy to apply. Long open time. Strong initial adhesion power. Stable and elastic adhesive. Suitable for use of wheelchair and rubber-wheeled vehicle traffic. Suitable for installation on under-floor heating systems.



APPLICATION AREAS

Concrete, sand/cement screeds. Smoothened sub-floors. Subfloors composed of wood materials. For Interior use only. Use only horizontal surface.



PACKAGE

Stock Code	Type	Volume	Box
FL205	Plastic Bucket	20kg	1





HB260

HYBRID FLOORING ADHESIVE

(Wood & Parquet)

Single component universal elastic flooring adhesive based on hybrid technology. Thanks to hybrid technology it is solvent, isocyanate and water free. It provides exceptional performance on strips and mosaic parquet, plank floors and wood block floors on porous and non-porous substrates.

**ECO
FRIENDLY**

**EXCELLENT
ELASTICITY**

**SOLVENT ISOCYANATE
WATER FREE**

It provides excellent performance on strips and mosaic parquet, plank floors and wood block floors on porous and non-porous substrates.



TECHNICAL FEATURES

Chemical Base	: Hybrid Polymer
Curing System	: Moisture
Density	: 1.46 ± 0.003 g/ml
Appearance/Color	: Homogeneous paste / Beige
Skin formation time	: 40±10 (23 °C, 50%R.H.)
Curing Rate	: Min. 2,5 mm/day (23 °C, 50%R.H.)
Sagging (ISO 7390)	: None
Shore A Hardness (ISO 868)	: 40-50
Elongation at Break % (ISO 37)	: Min. 150%
Volume Loss (EN ISO 10563)	: < 3%
Tensile Strength (ISO 37)	: Min. 1,5 N/mm ²



FEATURES

Ready to use: No mixing required. Provides high quality indoor air; Non-toxic, Eco-friendly. Form stable peaks when applied by a notched trowel. Suitable for under-floor heating systems. Permanently flexible. Rapid buildup of final bonding strength. Solvent, Isocyanate and water free. Very easy to apply.



APPLICATION AREAS

Suitable for bonding many different types of floors including strips and mosaic parquet, plank floors and wood block floors on porous and non-porous substrates.



PACKAGE

Stock Code	Type	Volume	Box
AHB60	Beige	600 ml	12
AHB2608	Beige	8 kg.	1
AHB2615	Beige	15 kg.	1



CERTIFICATES



**EXCELLENT
BONDING
STRENGTH**

**INTERIOR AND
EXTERIOR
APPLICATIONS**

**LONG
WORKING
AND GEL TIME**



PU ADH 305

RUBBER TILE AND PARQUET ADHESIVE

Two component elastic polyurethane based adhesive system. It is a solvent free adhesive.



TECHNICAL FEATURES

PU ADH 305

Appearance	: Beige or any desired color
Viscosity (cps)	: Thixotropic
Density (25 °C) (gr/cm ³)	: 1,8 (A component) : 1,2 (B component)
Solids (%)	: 100
Mix ratio	: 9/1: A/B (by weight)
Open time (min)	: 40-50 (at 23 °C 50% R.H.)
Tack free time (hr)	: 2-3 (at 23 °C 50% R.H.)
Film resistance	: Water and heat resistant
Covarage (kg/m ²)	: 0,9-1,1 (1 mm thickness)



PACKAGE

Stock Code	Type	Volume	Box
ADH3221	Green+Brown	24 kg. set (21 + 3 Kg)	1



FEATURES

Two component. Excellent bonding to applied surfaces. Suitable for use in adverse weather conditions. Solvent free. No smell. Flexible. Durable.



APPLICATION AREAS

Industrial rubber coatings. Bonding all types of parquets. Bonding artificial grass sports ground applications. Bonding rubber sheets to different surfaces such as; concrete, hardboard, chipboard. Bonding metal, ceramic, concrete, wood etc.



**EXCELLENT
BONDING
STRENGTH**

**INTERIOR AND
EXTERIOR
APPLICATIONS**

**LONG
WORKING
AND GEL TIME**



PU ADH 315

RUBBER TILE AND PARQUET ADHESIVE

Two component, solventless, polyurethane based rubber tile and parquet adhesive. It is specially designed for rubber tile and wood bonding to concrete surfaces. It is resistant to salt water and most chemicals. Easy applicable, durable and elastic adhesive for various substrates.



TECHNICAL FEATURES

PU ADH 315

Appearance	: Beige or any desired color
Viscosity (cps)	: Thixotropic
Density (25 °C) (gr/cm ³)	: 1,52 (A component) 1,2 (B component)
Solids (%)	: 100
Mix ratio	: 7/1: A/B (by weight)
Open time (min)	: 25-40 (at 23 °C 50% R.H.)
Tack free time (hr)	: 1-2 (at 23 °C 50% R.H.)
Film resistance	: Water and heat resistant
Covarage (kg/m ²)	: 0,9-1,1 (1 mm thickness)



PACKAGE

Stock Code	Type	Volume	Box
ADH3221	Green+Brown	24 kg. set (21 + 3 Kg)	1



FEATURES

Two component. Excellent bonding to applied surfaces. Suitable for use in adverse weather conditions. Solvent free. No smell. Flexible. Durable.



APPLICATION AREAS

Bonding all types of parquets. Bonding artificial grass sports ground applications. Bonding rubber sheets to different surfaces such as; concrete, hardboard, chipboard. Bonding metal, ceramic, concrete, wood etc.



**EXCELLENT
BONDING
STRENGTH**

**INTERIOR AND
EXTERIOR
APPLICATIONS**

**FLEXIBLE &
DURABLE**



PU ADH 325

ARTIFICIAL GRASS ADHESIVE

Two component, solventless, self leveling, polyurethane based adhesive designed for installation of artificial grass. It is resistant to water, moisture and corrosive materials. Suitable for use in adverse weather conditions.



TECHNICAL FEATURES

Appearance	: Green or any desired colour
Viscosity (cps)	: Thixotropic
Density (25 °C) (gr/cm ³)	: 1,52 (A component)
	: 1,2 (B component)
Solids (%)	: 100
Mix ratio	: 5/1: A/b (By weight)
Open time (min)	: 25-40 (at 23°C 50% R.H.)
Tack free time (hr)	: 1-1,5 (at 23°C 50% R.H.)
Film resistance	: Water and heat resistant
Covrage (kg/m ²)	: 0,9-1,1 (1 mm thickness)



FEATURES

Two component. Excellent bonding to applied surfaces. Suitable for use in adverse weather conditions. Solvent free. No smell. Flexible. Durable.



APPLICATION AREAS

Bonding artificial grass sports ground applications. Bonding rubber sheets to different surfaces such as; concrete, hardboard, chipboard. Bonding metal, ceramic, concrete, wood etc.



PACKAGE

Stock Code	Type	Volume	Box
ADH3215	Green+Brown	18 kg. set (15 + 3 kg)	1



**PRESS
SYSTEM**

**EXCELLENT
ADHESION TO
RUBBER
GRANULES**

**FAST
CURE**



BINDER PU RB 205 STANDARD PRESS

One component, polyurethane binder which cures by reaction with atmospheric moisture. It is 100% solids, low viscosity and produces a elastic membrane with excellent adhesion to recycled rubber granules. This is our fast curing speed binder which is primarily used in press system applications.



TECHNICAL FEATURES

Basis	: Polyurethane
Color	: Yellow/Amber
Solids by weight	: 100 %
Viscosity	: 4000-5500 mPa.s (at 25 °C)
Density	: 1,1±0,03 gr/cm ³ (at 25 °C)
% NCO	: 9,5 -11,5
Dust Free Time	: 100-130 min (at 23 °C 50% H)

Consumption:

Akfix PU RB 205	: 5- 6% by weight
Rubber granules	: 94-95 % by weight



FEATURES

One component. Excellent adhesion on rubber granules. Flexible. Durable. Solvent free.



APPLICATION AREAS

Parks. Children's playgrounds. School playgrounds. Sport facilities. Outdoor recreation areas. Synthetic surfaces. Rubber floor and doormat. Sound vibration required surfaces.



PACKAGE

Stock Code	Type	Volume	Box
PURB205.220	Amber	220 kg drums	1



**ONE
COMPONENT**

**EXCELLENT
ADHESION TO
RUBBER GRANULES**

**ENHANCED UV
STABILITY**



BINDER PU RB 102 POUR IN PLACE

One component, UV stability enhanced polyurethane binder which cures by reaction with atmospheric moisture. It is 100% solids, low viscosity and produces a elastic membrane with excellent adhesion to recycled rubber granules. This is our slow curing speed binder which is primarily used in pour in place applications where humidity is in the 50%- 80% and temperatures is in the 20-35 °C.



TECHNICAL FEATURES

Basis	: Polyurethane
Color	: Yellow/Amber
Solids by weight (%)	: 100
Viscosity (mPa.s)	: 3500-4000 (at 25 °C)
Density (gr/cm³)	: 1,1 ±0,03 (at 25 °C)
Free NCO (%)	: 10 -11,5
Open Time (hr)	: 1- 1,5 (at 23 °C 50% H)
Cure Time (hr)	: 24 (at 23 °C 50% H)

Consumption:

Akfix PU RB 102	: 15-20% by weight
Rubber granules	: 80-85 % by weight



FEATURES

One component. Excellent adhesion on rubber granules. Enhanced UV stability. Flexible. Durable. Moisture cure. Solvent free.



APPLICATION AREAS

Parks. Children and school playgrounds. Running tracks and walkways. Sport facilities. Outdoor recreation areas. Synthetic surfaces.



PACKAGE

Stock Code	Type	Volume	Box
PURB102.220	Amber	220 kg drums	1



**EXCELLENT UV
AND COLOR
STABILITY**

**EXCELLENT
ADHESION TO
RUBBER
GRANULES**

**INTERIOR AND
EXTERIOR
APPLICATIONS**



BINDER PU RB 103

ALIPHATIC BINDER

PURB103 is a solventless, moisture cure, one component, transparent, UV stable polyurethane binder. It is designed for track, sport and playground applications. It is based on high quality aliphatic prepolymer for excellent UV and color stability.



TECHNICAL FEATURES

Basis	: Polyurethane
Color	: Transparent
Solids content (%)	: 100
Viscosity (cps)	: 2000-3000 (at 25 °C)
Density (gr/cm ³)	: 1,00-1,05 (at 25 °C)
Free NCO Content (%)	: 8,5 -9
Full Cure Time (min.)	: 24 hr (23 °C 50% R.H.)

Consumption:

Akfix PU RB 103	: 15-20% by weight
Rubber granules	: 80-85 % by weight



FEATURES

Excellent UV and color stability. High elongation. Excellent bonding of rubber granules. Easy application. Environmentally friendly. Water resistant.



APPLICATION AREAS

Parks. Children and school Playgrounds. Running tracks. Sport facilities. Outdoor carpets and tiles. Sport facilities. Outdoor recreation areas. Synthetic surfaces.



PACKAGE

Stock Code	Type	Volume	Box
PURB103.220	Transparent	220 kg drums	1





EPOXY COATING SYSTEMS

www.Akfix.com



**SOLVENT
FREE**

**HIGH IMPACT
AND ABRASION
RESISTANCE**

**SELF
LEVELING**



SLB 51

EPOXY COATING SELF LEVELING (BASE COAT)

Two component, solvent free, self-leveling, epoxy coating with high impact and abrasion strength with also a very good resistance against acidic and basic solutions.



TECHNICAL FEATURES

	METOD	DATAS
Mix Ratio	-	5:1
Viscosity (Mixture) 23°C	ASTM D2196-99	1200-1800 cps
Density (Component A) 23°C	EN ISO 2811-1	1,70 g/cm ³
Density (Component B) 23°C	EN ISO 2811-1	1,02 g//cm ³
Density (Mixture)	EN ISO 2811-1	1,53 g/cm ³
Pot Life 23°C	INTERNAL	1 hours
Tack Free Time 23°C	INTERNAL	4 hours
Light Traffic	INTERNAL	24 hours
Heavy Traffic	INTERNAL	7 days
Shore D Hardness	ASTM D2240	80 (After 7 days)
Adhesion strength	ASTM D4541	>3N/mm ² (concrete)
Shrinkage	INTERNAL	0%
Compression strength	EN 196-1	>50 N/mm ²
Application Temperature	-	+10 °C +35 °C



FEATURES

Solvent free. High impact resistance. Designed for application by brush and roller. Excellent chemical resistance. Excellent mechanical properties; high tensile and tear strength, abrasion resistance. Resistant to bacterial and fungus growth. Creates a glossy, easy to clean anti-dust surface.



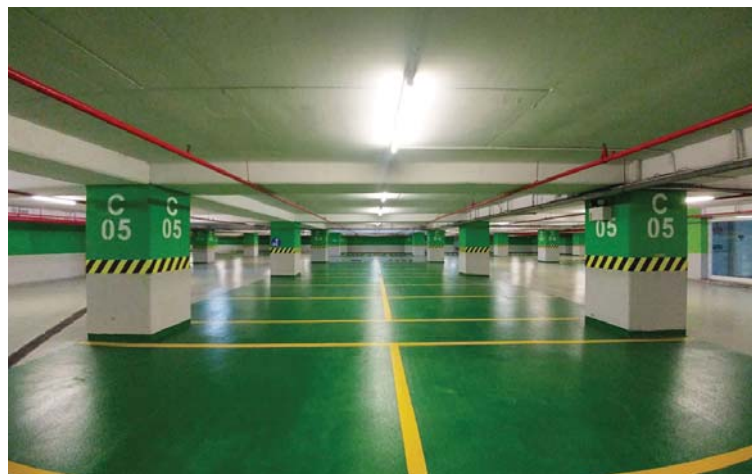
APPLICATION AREAS

High traffic car parking areas. Warehouses. Industrial floors. Hotels. Retail shopping areas. Hospitals.



PACKAGE

Stock Code	Type	Volume	Box
AEPSLB5118	RAL 7040	18 kg. set (15 + 3 kg)	1



**HIGH UV
RESISTANCE**

**SOLVENT
FREE**

**HIGH MECHANICAL
AND CHEMICAL
RESISTANCE**



SLT 41

EPOXY COATING SELF LEVELING (TOP COAT)

Two component, solvent free, self-leveling, high build epoxy top coat. Because of UV resistance and high gloss retention properties it is ideal for outdoor applications.



TECHNICAL FEATURES

	METOD	DATAS
Mix Ratio	-	4:1
Viscosity (Mixture)	ASTM D2196-99	1200-1800 cps Density
(Component A)	EN ISO 2811-1	1,70 g/cm ³ (25°C)
Density (Component B)	EN ISO 2811-1	1,02 g/cm ³ (25°C)
Density (Mixture)	EN ISO 2811-1	1,53 g/cm ³ (25°C)
Pot Life	INTERNAL	1 hour (23 °C 50% R.H.)
Tack Free Time 23°C	INTERNAL	4 hours (23 °C 50% R.H.)
Light Traffic	INTERNAL	24 hours(23 °C 50% R.H.)
Heavy Traffic	INTERNAL	7 days (23 °C 50% R.H.)
Shore D Hardness	ASTM D2240	80 (After 7 days)
Adhesion strength	ASTM D4541	>3 N/mm ² (Concrete)
Shrinkage	INTERNAL	0%
Application Temperature	-	+10 °C +35 °C



FEATURES

Solvent free, 100% solid. Attractive, high gloss, reflective coating. High impact resistance. Durable, impermeable and seamless. Excellent chemical resistance. Excellent mechanical properties; high tensile and tear strength, abrasion resistance.



APPLICATION AREAS

Typical applications may include:
Production rooms, offices and even pharmaceutical laboratories. Laboratories. Museums and galleries. Animal shelters and veterinary clinics.



PACKAGE

Stock Code	Type	Volume	Box
AEPSLT4118	RAL 7040	15 kg. set (12+3 kg)	1



**TEXTURIZED
FINISH**

**SLIP
RESISTANT**

**GOOD
ABRASION
RESISTANCE**



TEX 71

EPOXY COATING TEXTURIZED (BASE COAT)

Two part, solvent free, epoxy resin based thixotropic coating. Its special formulation provides easy to clean, anti-slip unique texturized finish.



TECHNICAL FEATURES

	METOD	DATAS
Mix Ratio	-	7:1
Density (Component A)	ASTM D2196-99	1,89 g/cm ³ (23°C)
Density (Component B)	EN ISO 2811-1	1,05 g/cm ³ (23°C)
Density (Mixture)	EN ISO 2811-1	1,73 g/cm ³ (23°C)
Pot Life	INTERNAL	50 min. (23°C 50% R.H.)
Tack Free Time	INTERNAL	4 hours (23°C 50% R.H.)
Foot Traffic Time	INTERNAL	24 hours (23°C 50% R.H.)
Full Cure Time	INTERNAL	7 days (23 °C 50% R.H.)
Shore D Hardness	ASTM D2240	80 (After 7 days)
Adhesion strength	ASTM D 4541	>3 N/mm ² (concrete)
Compression strength	EN 196-1	>60 N/mm ²
Application Temperature	-	+10°C-35°C



FEATURES

Slip Resistant. Good abrasion resistance. Chemically resistant. Can be subjected to normal up to medium heavy mechanical and chemical loading. Easy and fast application. Easy to clean.



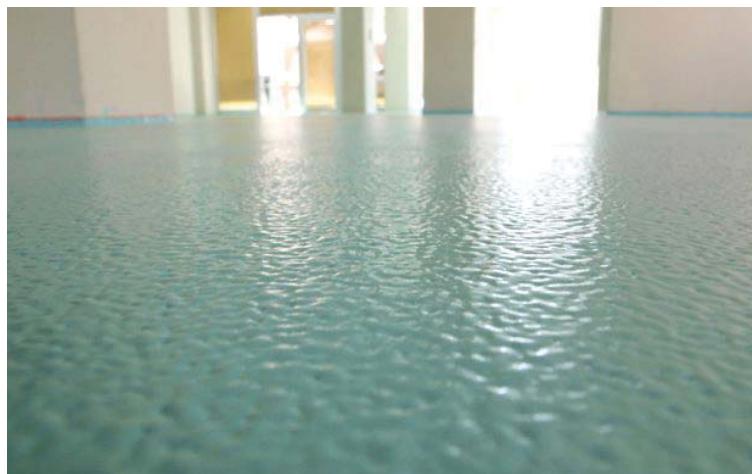
APPLICATION AREAS

Slip resistant coating for concrete and cement screeds. Seal coat for broadcast coatings. Industrial floors, storage areas and loading stations. For production areas, storage and assembly areas or exhibition areas etc.. Parking lots and service areas.



PACKAGE

Stock Code	Type	Volume	Box
AEPTTEX7124	RAL 7040	24 kg. set (21 + 3kg)	1



TRANSPARENT

IDEAL FOR
DECORATIF
APPLICATION

HIGH UV
RESISTANCE



SLT 21

EPOXY COATING SELF LEVELING (TOP COAT)

Two component, solvent free, self leveling, epoxy coating designed for high build decorative coatings and decorative quartz/flake applications. Akfix SLT21 is ideal as a clear top coat over decorative quartz or vinyl flake floor broad cast systems.



TECHNICAL FEATURES

	METOD	DATAS
Mix Ratio	-	2:1
Viscosity (Mixture)	ASTM D2196-99	700 cps
Density (Component A)	EN ISO 2811-1	1,1 g/cm ³ (25°C)
Density (Component B)	EN ISO 2811-1	1,02 g/cm ³ (25°C)
Density (Mixture)	EN ISO 2811-1	1,08 g/cm ³ (25°C)
Pot Life	INTERNAL	45 min. (23°C 50% R.H.)
Tack Free Time	INTERNAL	4 hours (23°C 50% R.H.)
Light Traffic Time	INTERNAL	24 hours (23°C 50% R.H.)
Full Cure Time	INTERNAL	7 days (23°C 50% R.H.)
Shore D Hardness	ASTM D2240	80 (After 7 days)
Shrinkage	INTERNAL	0 %
Adhesion strength	ASTM D4541	>3N/mm ² (Concrete)
UV Resistance	ASTM G23	Color stable, no crack or blister (1000 hr)
Application Temperature	-	10°C +35°C



FEATURES

Solvent free, 100% solid. Attractive, high gloss, reflective coating. High impact resistance. Durable, impermeable and seamless. Excellent mechanical properties.



APPLICATION AREAS

Typical applications may include:
Offices and laboratories. Museums and galleries. Auto dealerships.
3D decorative applications.



PACKAGE

Stock Code	Type	Volume	Box
AEPSLT4118	Transparent	15 kg. set (10 + 5 kg)	1



POLYUREA



www.Akfix.com





POLYUREA 1044 STANDARD PURE

Very fast set, 2-component, 100% pure flexible coating derived from a reaction of an isocyanate prepolymer and an amine terminated resin blend. This aromatic pure polyurea has been designed to protect and coat concrete, metal, wood, ceramic, geotextile surfaces. It is moisture and temperature insensitivity, allowing application in problematic ambient conditions. The material must be applied utilizing high pressure, heated plural component spray proportioning equipment.

**VERY FAST
CURE**

**EXCELLENT
MECHANICAL AND
CHEMICAL RESISTANCE**

**EXCELLENT
STRUCTURAL
STRENGTH**

This aromatic pure polyurea has been designed to protect and coat concrete, metal, wood, ceramic, geotextile surfaces.





TECHNICAL FEATURES

	Method	Datas
Chemical structure		A: MDI Prepolymer B: Amine Resin
Color		Grey, Blue and any RAL color
VOC content (%)	ASTM D1259	0
Solid content (%)	ASTM D2697	100
Gel time (sec)	--	5-10
Tack free time (sec)	--	15-25
Recoat time (hr)		0-12 (without pretreatment)
Density (gr/cm ³)	ASTM D792	0,99-1,03
Tensile strength (MPa)	ASTM D638	≥18
Modulus (MPa)	ASTM D638	%100 elongation ≥10 %300 elongation ≥15
Elongation at break (%)	ASTM D638	≥350
Hardness (Shore D)	ASTM D2240	40-45
Tear strength (N/mm)	ASTM D 624	≥50
Impact resistance	EN ISO 6272-1	Class III
Pull off strength (N/mm ²)	ASTM D 4541	Concrete: ≥2,5 Steel: ≥6
Abrasion resistance	EN ISO 5470-1	23 mg (H22, 1000 cycle)
Bond strength by pull-off	EN 1542	2,0 N/mm ²
Thermal Shock Resistance (200°C in 1 min.)	--	Resistant



PACKAGE

Stock Code	Type	Volume	Box
WP044206	RAL 7040	425 kg set (225+200kg)	1
WP044209	RAL 5012	425 kg set (225+200kg)	1



CERTIFICATES

Tested according to EN 1186
Migration testing on Food Contact
Materials and found in compliance
with regulation EU No 10/2011
with amendments

CE
EN 1504- 2



FEATURES

100% solid, VOC free, no solvents. No catalyst. Fast reactivity and fast return to service time. Seamless and jointless coating. Little or no odor. Excellent thermal stability. Water resistant. Excellent adhesion on concrete, steel, aluminum, fibers, wood, foam etc. Excellent flexibility. Non sensitivity to temperature and humidity. Excellent chemical resistance. Excellent impact and abrasion resistance. Anticorrosive. Very good tensile and structural strength. UV, chlorine and saltwater resistant. Variable application thickness possible. Broad color spectrum.



APPLICATION AREAS

General water isolation – pools, swimming pools, ponds, membranes, waste water treatments, manholes, sewer -lining , roofs. Floors – industrial floors, hospitals, factory, auto parks, garage. Truck bed liners. Construction – roads, bridges, railways, high speed railways, tunnels, airports. Marine industry.



**HYBRID
TECHNOLOGY**

**VERY
FAST CURE**

**EXCELLENT
MECHANICAL
PROPERTIES**



POLYUREA HB 1010 HYBRID POLYUREA

Very fast set, rapid curing, flexible, two component hybrid polyurea system. It is derived from a reaction of an isocyanate prepolymer and an amine terminated resin blend. It can be applied as an economic waterproofing and coating alternative to pure polyurea products. The material must be applied utilizing high pressure, heated plural component spray proportioning equipment. Polyurea HB 1010 conforms to requirements of the EN 1504-2 standard (concrete surface protection systems).



TECHNICAL FEATURES

Chemical structure	Method	Datas
		A: MDI Prepolymer B: Amine Resin
VOC content (%)	ASTM D1259	0
Solid content (%)	ASTM D2697	100
Gel time (sec)	--	5-10
Tack free time (sec)	--	15-30
Recoat time (hr)	--	0-12 (without any pretreatment)
Density (gr/cm ³)	ASTM D792	0,99-1,03
Tensile strength (MPa)	ASTM D638	≥15
Modulus (MPa)	ASTM D638	%100 elongation ≥ 5
Elongation at break (%)	ASTM D638	≥350
Hardness (Shore A)	ASTM D2240	90-95
Tear strength (N/mm)	ASTM D-624	≥25
Taber abrasion (mg)	EN ISO 5470-1	<250 (H22, 1000 cycle)
Impact resistance	EN ISO 6272-1	Class III
Pull off strength (N/mm ²)	ASTM D4541	Concrete: ≥3 Steel: ≥6



FEATURES

Economic alternative to pure polyurea products. Fast reactivity and return to service time. 100% solid, VOC free, no solvents. Environmentally friendly. Seamless coating. Very good tensile and structural strength. Excellent adhesion on concrete, steel, aluminum, fibers, wood, foam etc. Excellent flexibility. Excellent crack bridging properties. Variable application thickness possible. Broad color spectrum.



APPLICATION AREAS

General waterproofing, screed concrete, marble and other floor coverings. General waterproofing for light foot traffic areas like roofs, balconies, terraces, walkways and public areas. Waterproofing of ground concrete and load bearing walls. Play grounds and decorative applications. On thermal insulation products for waterproofing (polyurethane foam, EPS, XPS etc.)



PACKAGE

Stock Code	Type	Volume	Box
WPHB10206	RAL 7040	425 kg set (225+200kg)	1
WPHB10209	RAL 5012	425 kg set (225+200kg)	1



CERTIFICATES



EN 1504-2



**HIGH UV
RESISTANCE**

**EXCELLENT
COLOR
STABILITY**

**VERY
FAST CURE**



POLYUREA AL 1070 ALIPHATIC POLYUREA (TOPCOAT)

%100 solid, fast curing, 2 component, UV resistive, aliphatic pure polyurea system. Its formulation is designed for maintaining high color stability and preventing discoloration where surfaces are exposed to sun light continuously. While it can be directly used on most surfaces, it also can be used as a top layer on epoxy, polyurethane and polyurea. After fully cured, it forms a coating material with high tensile strength and abrasion resistance. For protection and coating purposes, it can be applied on concrete, metal, wood, ceramic and PU foam. It can form strong films in wide variety of thicknesses. The material must be applied utilizing high pressure, heated plural component spray proportioning equipment.



TECHNICAL FEATURES

	Method	Datas
Chemical structure		A: MDI Prepolymer B: Amine Resin
VOC content (%)	ASTM D1259	0
Solid conten (%)	ASTM D2697	100
Gel time (sec)	--	15-30
Tack free time (sec)	--	45-60
Recoat time(hr)		0-12
Density (gr/cm³)	ASTM D792	1,05-1,08
Tensile strength (MPa)	ASTM D638	>16
Elongation at break (%)	ASTM D638	≥400
Hardness (Shore D)	ASTM D2240	40-45
Abrasion resistance (mg)	EN ISO 5470-1	<33 (H22, 1000 cycle)
Pull off strength (N/mm²)	ASTM D4541	Concrete: ≥2,5 Steel: ≥6



FEATURES

Excellent resistance to UV light. Excellent color stability. Fast reactivity and fast return to service time. %100 solid, VOC free, no odor. Very good tensile and structural strength. Anticorrosive. High Hydrolysis resistance. Excellent temperature stability. Seamless and joint-less coating with high water resistance. Excellent adhesion on concrete, steel, aluminum, wood, etc. No sensitivity to temperature and humidity. Variable application thickness is possible. Broad color spectrum.



APPLICATION AREAS

At exterior coatings where color stability is required. Swimming pools and water parks. Roofs, garages and parking lots. Airports, shipyards and marina. Wind energy plants. Amusement parks and playgrounds. Decorative designs. Furniture industry.



PACKAGE

Stock Code	Type	Volume	Box
WPAL70206	RAL 7040	410 kg set (210+200kg)	1
WPAL70209	RAL 5012	410 kg set (210+200kg)	1
WPAL70205	RAL 3000	410 kg set (210+200kg)	1



CERTIFICATES



POLYUREA 1045 ECO PURE



Very fast set, rapid curing, flexible, two component, economic pure polyurea coating system derived from a reaction of an isocyanate prepolymer and an amine terminated resin blend. The system is designed as a waterproofing and floor protective coating for concrete, metal, wood, ceramic, geotextile and PU foam substrates. The material must be applied utilizing high pressure, heated plural component spray proportioning equipment.



TECHNICAL FEATURES

	Method	Datas
Chemical Structure		A: MDI Prepolymer B: Amine Resin
VOC content (%)	ASTM D1259	0
Solid content (%)	ASTM D2697	100
Gel time (sec)	--	5-10
Tack free time (sec)	--	15-30
Recoat time (hr)	--	0-12 (without pre-treatment)
Post cure time (hr)	--	24
Density (gr/cm ³)	ASTM D792	0,99-1,03
Tensile strength (MPa)	ASTM D638	≥ 15
Modulus (MPa)	ASTM D638	%100 elongation ≥10 %300 elongation ≥12
Elongation at break (%)	ASTM D638	≥375
Hardness (Shore D)	ASTM D2240	35-40
Hardness (Shore A)	ASTM D2240	90-95
Tear strength (N/mm)	ASTM D 624	≥40
Taber abrasion (mg)	EN ISO 5470-1	<100 (H22/1000 cycle)
Impact resistance	EN ISO 6272-1	Class III
Thermal Resistance	--	-30 °C +100°C
Pull off strength (N/mm ²)	ASTM D 4541	Concrete: ≥2,5 Steel: ≥6



FEATURES

Fast reactivity and fast return to service time. Seamless coating. 100 % solid, VOC free, no odour. Very good tensile and structural strength. Excellent thermal stability. Excellent chemical resistance. Excellent impact and abrasion resistance. Excellent adhesion on concrete, steel, aluminium, fibres, wood, foam etc. Excellent flexibility. Temperature and moisture insensitive. UV, chlorine and saltwater resistant. Variable application thickness possible. Broad colour spectrum.



APPLICATION AREAS

General waterproofing and anticorrosion applications- tanks, pools, swimming pools, ponds, pipes, pipelines, roof, balcony and terrace coatings. Floors- industrial floors, hospitals, factories. Construction- roads, bridge decks, airports, line striping. Marine industry- ship's underwater part and ship's decks protection and ship docks. Leisure industry- water parks, aquariums linings, playgrounds and decorative applications. On thermal insulation products for waterproofing (polyurethane foam, EPS, XPS etc.)



CERTIFICATES



POLYUREA HP 1044 ABRASION RESISTANT POLYUREA



Very fast curing, two component, aromatic, pure polyurea system derived from a reaction of an isocyanate prepolymer and an amine terminated resin blend. It is a high performance product designed especially for industrial applications where high abrasion, chemical and corrosion resistance is a priority. For waterproofing and protecting purposes, this product can be applied on materials like concrete, metal, wood, ceramic and many other substrates. The material must be applied utilizing high pressure, heated plural component spray proportioning equipment.



TECHNICAL FEATURES

	Method	Datas
Chemical structure		A: MDI Prepolymer B: Amine Resin
VOC content (%)	ASTM D1259	0
Solid content (%)	ASTM D2697	100
Gel time (sec)	--	3-5
Tack free time (sec)	--	10-25
Recoat time (hr)	--	0-12 (without pretreatment)
Post cure time (hr)	--	24
Density (gr/cm ³)	ASTM D792	0,99-1,03
Tensile strength (MPa)	ASTM D638	≥ 20
Elongation at break (%)	ASTM D638	≥200
Hardness (Shore D)	ASTM D2240	50-45
Tear strength (N/mm)	ASTM D 624	≥50
Taber abrasion (mg)	EN ISO 5470-1	<25 (H22, 1000 cycle)
Impact resistance	EN ISO 6272-1	Class III
Thermal Resistance	--	-30 °C +100°C
Pull off strength (N/mm ²)	ASTM D 4541	Concrete: ≥2,5 Steel: ≥6



FEATURES

Excellent impact and abrasion resistance. Fast reactivity and fast return to service time. Seamless coating. 100% solid, VOC free, no solvents. Environmentally friendly. Very good tensile and structural strength. Excellent chemical resistance. Excellent impact and abrasion resistance. Excellent thermal stability. Excellent adhesion on concrete, steel, aluminum, fibers, wood, foam etc. Excellent corrosion protection. UV, chlorine and saltwater resistant. Variable application thickness is possible. Broad color spectrum.



APPLICATION AREAS

It is used in where high chemical and mechanical properties are required as: Industrial & manufacturing facilities, storage, load and high traffic areas. Wastewater infrastructure. Roads, bridge decks, railways, tunnels and truck bed liners. Mining containment, process equipment and distribution. Primary & secondary containments. Power plants , refineries, oil and gas industry. Cargo containers. Parking lots and garages. Cold storage facilities, loading docks and ramps.

POLYUREA FA 1044 POTABLE WATER & FOOD CONTACT APPROVED



Very fast curing, 2-component aromatic pure polyurea system, 100% solid, flexible coating derived from a reaction of an isocyanate prepolymer and an amine terminated resin blend. This product has been approved for potable water and food contact and especially designed to protect potable water tanks and pipes. The material must be applied utilizing high pressure, heated plural component spray proportioning equipment.



TECHNICAL FEATURES

	Method	Datas
Chemical structure		A: MDI Prepolymer B: Amine Resin
VOC content (%)	ASTM D1259	0
Solid content (%)	ASTM D2697	100
Gel time (sec)	--	5-10
Tack free time (sec)	--	15-30
Recoat time (hr)	--	0-12 (without pretreatment)
Post cure time (hr)	--	24
Density (gr/cm ³)	ASTM D792	0,99-1,03
Tensile strength (MPa)	ASTM D638	≥ 18
Modulus (MPa)	ASTM D638	%100 elongation ≥10 %300 elongation ≥15
Elongation at break (%)	ASTM D638	≥350
Hardness (Shore D)	ASTM D2240	40-45
Hardness (Shore A)	ASTM D2240	90-95
Tear strength (N/mm)	ASTM D 624	≥50
Impact resistance	EN ISO 6272-1	Class III
Thermal Resistance	--	-30 °C +100°C
Pull off strength (N/mm ²)	ASTM D 4541	Concrete: ≥2,5 Steel: ≥6
Approval to food contact	EN 1186-1/15	Suitable



FEATURES

Suitability for contact with drinking water and food. 100% solid, VOC free, no odor. Does not contain catalyst. Fast reactivity and fast return to service time. Excellent temperature stability. Seamless and jointless coating with high water resistance. Excellent adhesion on concrete, steel, aluminum, wood, etc. Excellent flexibility. No sensitivity to temperature and humidity. Perfect endurance to chemicals. Very good resistance to impact and corrosion. Very good tensile and structural strength. Variable application thickness is possible.



APPLICATION AREAS

Potable water storage facilities and tanks. Potable water pipes. Food production and processing plants. Cold storages. Rain storage facilities and sedimentation tanks. Filtration systems. Swimming pools, amusement parks and aquariums

POLYUREA FR 1044 FIRE RETARDANT



Very fast curing, 2-component aromatic pure polyurea system, 100% solid, flexible coating derived from a reaction of an isocyanate prepolymer and an amine terminated resin blend. It's developed for applications which require fire retardant and flame resistant coating. Especially designed to protect and coat concrete, metal, wood, ceramic, geotextile substrates. The material must be applied utilizing high pressure, heated plural component spray proportioning equipment.



TECHNICAL FEATURES

	Method	Datas
Chemical structure		A: MDI Prepolymer B: Amine Resin
VOC content (%)	ASTM D1259	0
Solid content (%)	ASTM D2697	100
Gel time (sec)	--	5-10
Tack free time (sec)	--	15-25
Recoat time (hr)	--	0-6
Density (gr/cm ³)	ASTM D792	0,99-1,03
Tensile strength (MPa)	ASTM D638	16-18
Modulus (MPa)	ASTM D638	%100 elongation ≥10 %300 elongation ≥15
Elongation at break (%)	ASTM D638	≥350
Hardness (Shore D)	ASTM D2240	40-45
Hardness (Shore A)	ASTM D2240	85-90
Tear strength (N/mm)	ASTM D624	50-55
Taber abrasion (mg)	EN ISO 5470-1	<90 (H22, 1000 cycle)
Pull off strength (N/mm ²)	ASTM D4541	Concrete: ≥2,5 Steel: ≥6
Reaction to Fire Class	TS EN 13501-1+A1:2013-1	B _s S1



FEATURES

Fire resistant system. 100% solid, VOC free, no odor. No catalyst. Fast reactivity and fast return to service time. Excellent thermal stability. Seamless and joint less coating with water resistance. Excellent adhesion on concrete, steel, aluminum, fibers, wood, geotextiles etc. Excellent flexibility. Temperature and moisture insensitive. Excellent chemical resistance. Very good impact and corrosion resistance. Very good tensile and structural strength. Variable application thickness possible. Broad color spectrum



APPLICATION AREAS

Floors where fire retardant is necessary , industrial facilities, hospitals, factories, parking lots, garage, transportation. Construction - airports, line striping, ship decks, ship ports and canals. High abrasion applications - oil and gas industry, refineries, petrochemical industry, mining, secondary containment. Energy industry. Waste water treatment plants , tank coating, secondary storage tanks.

POLYUREA AS 1044 ANTI-STATIC POLYUREA



Very fast curing, two component, aromatic, flexible, pure polyurea system coating derived from a reaction of an isocyanate prepolymer and an amine terminated resin blend. This product is especially applied to surfaces to build up antistatic coatings to avoid risks of ignition due to electrostatic charge. It can be applied to areas where flammable liquids of danger classes are stored. For protecting and coating purposes, this product can be applied on materials like concrete, metal, wood, ceramic and PU foam. The material must be applied utilizing high pressure, heated plural component spray proportioning equipment.



TECHNICAL FEATURES

	Method	Datas
Chemical structure		A: MDI Prepolymer B: Amine Resin
Color		Grey and any RAL color
VOC content (%)	ASTM D1259	0
Solid content (%)	ASTM D2697	100
Gel time (sec)	--	5-10
Tack free time (sec)	--	15-30
Recoat time (hr)	--	0-12 (without pretreatment)
Post cure time (hr)	--	24
Density (gr/cm ³)	ASTM D792	0,99-1,03
Tensile strength (MPa)	ASTM D638	≥ 16
Modulus (MPa)	ASTM D638	%100 elongation ≥10 %300 elongation ≥15
Elongation at break (%)	ASTM D638	≥350
Hardness (Shore D)	ASTM D2240	40-45
Hardness (Shore A)	ASTM D2240	90-95
Thermal Resistance	--	-25 °C +120°C
Pull off strength (N/mm ²)	ASTM D 4541	Concrete: ≥2 Steel: ≥6
Surface resistance(ohm)	DIN IEC 61340	≤0,5*10 ⁹ (fulfills the requirement for coating systems)
Abrasion resistance	EN ISO 5470-1	< 200 (H22, 1000 cycle)
Bond strength by pull-off	EN 1542	2,0 N/mm ²
Thermal Shock Resistance (200°C in 1 min.)	--	Resistant



FEATURES

Antistatic coating. Fast reactivity and fast return to service time. Hardens just in 10 second. Fast application time; one worker can cover 1000m² area in 2mm thickness in 1 day. 100% solid, VOC free, no solvents. Environmentally friendly. Excellent thermal stability (-25°C-120°C). Very good tensile and structural strength. Excellent chemical resistance. Long lasting (minimum 25 years). Excellent impact and abrasion resistance. Excellent adhesion on concrete, steel, aluminum, fibers, wood, foam etc. Excellent flexibility. Excellent crack bridging properties. Temperature and moisture insensitive. Excellent corrosion protection. UV, chlorine and saltwater resistant.



APPLICATION AREAS

Electric transformers. Thermal power plants. Manufacturing facilities and storage areas. Schools. Industrial cold rooms. Laboratories. Hospitals and operating rooms. Parking lots and garages. Oil and gas industry.

POLYUREA FX 1044 ENHANCED FLEXIBILITY



Very fast curing, two component and elastomeric pure polyurea system. In addition to having basic properties of polyurea systems properties, it has a lot more elasticity to be able to use where elasticity is essential like in metal roof and geotextile coatings. It can be used with confidence in both interior and exterior applications. The material must be applied utilizing high pressure, heated plural component spray proportioning equipment.



TECHNICAL FEATURES

	Method	Datas
Chemical structure		A: MDI Prepolymer B: Amine Resin
VOC content (%)	ASTM D1259	0
Solid content (%)	ASTM D2697	100
Gel time (sec)	--	20-30
Tack free time (sec)	--	60-90
Recoat time (hr)	--	0-12 (without pretreatment)
Post cure time (hr)	--	24
Density (gr/cm ³)	ASTM D792	0,99-1,03
Tensile strength (MPa)	ASTM D638	≥ 10
Modulus (MPa)	ASTM D638	%100 elongation ≥3 %300 elongation ≥5
Elongation at break (%)	ASTM D638	≥500
Hardness (Shore A)	ASTM D2240	70-75
Pull off strength (N/mm ²)	ASTM D 4541	Concrete: ≥2,5 Steel: ≥6



FEATURES

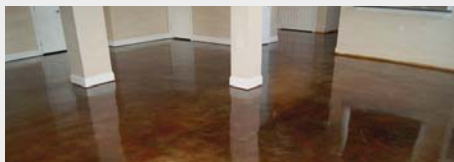
Excellent flexibility and elongation. Fast reactivity and fast return to service time. Seamless coating. 100% solid, VOC free, no solvents. Environmentally friendly. Very good tensile and structural strength. Excellent adhesion on concrete, steel, aluminum, fibers, wood, foam etc. Excellent flexibility. Excellent crack bridging properties. Temperature and moisture insensitive. UV, chlorine and saltwater resistant. Variable application thickness is possible. Broad color spectrum.



APPLICATION AREAS

General waterproofing applications where high flexibility necessary as: Pools and storage tanks. Roofs, terraces and garages. Geotextile coating. Decorative applications. Water and amusement parks.

POLYUREA PA 1070 POLYASPARTIC SOFT (TOPCOAT)



Two component, rapid curing, UV resistant, Excellent color stable new generation polyaspartic based polyurea surface coating system for both decorative and protective applications. On account of the UV and color fast properties, it is ideal for use as thin layer coating and clear topcoat sealer for surface protection on existing coating systems. After the product is completely cured, it forms a glossy, smooth top layer with high scratch, abrasion and chemical resistance. Polyaspartic system can be applied in a single or multiple coats by roll, brush or squeegee to a variety of substrates including concrete and metal.



TECHNICAL FEATURES

	Method	Datas
Chemical structure		A: HDI Prepolymer B: Amine Resin
Mix ratio (by weight)	--	40:60 (A:B)
Consumption (g/m ²)	--	150-200
Recommended thickness (µm)	--	150-200
VOC content (%)	ASTM D1259	0
Solid content (%)	ASTM D2697	95
Gel time (min)	--	30-35*
Tack free time (min)	--	60-70*
Pedestrian traffic time (hr)	--	3-4*
Full cure time (day)	--	7*
Tensile strength (MPa)	ASTM D638	> 9
Elongation at break (%)	ASTM D638	>100
Hardness (Shore A)	ASTM D2240	65-70

*Drying time is temperature, humidity and film thickness dependent.



FEATURES

Excellent UV light resistance. Long working and gel time. Fast reactivity and cure time (applicable to pedestrian traffic after 3-4 hours). Rapid return to service (return to service in 24 hours). Easy application and spreading. Excellent adhesion to concrete and metal substrates. High abrasion, impact and corrosion resistance. Excellent chemical resistance. Resistant to chlorine and saltwater. High hydrolysis resistance. Perfect thermal stability. Available in transparent and several RAL colours.



APPLICATION AREAS

As top layer over polyurea coatings where UV resistance and color stability is required. Clear sealer over decorative concrete surfaces. Swimming pools, terraces and garage floors. Restaurant and hospital flooring. Water parks, amusement parks and decorative applications.

POLYUREA PA 1005 POLYASPARTIC HARD (TOPCOAT)



Two component, rapid curing, UV resistant, Excellent color stable new generation polyaspartic based polyurea surface coating system for both decorative and protective applications. On account of the UV and color fast properties, it is ideal for use as thin layer coating and clear topcoat sealer for surface protection on existing coating systems. After the product is completely cured, it forms a glossy, smooth top layer with high scratch, abrasion and chemical resistance. Polyaspartic system can be applied in a single or multiple coats by roll, brush or squeegee to a variety of substrates including concrete and metal.



TECHNICAL FEATURES

	Method	Datas
Chemical structure		A: HDI Prepolymer B: Amine Resin
Mix ratio (by weight)	--	60:40 (A:B)
Consumption (g/m ²)	--	150-200
Recommended thickness (µm)	--	150-200
VOC content (%)	ASTM D1259	0
Solid content (%)	ASTM D2697	95
Gel time (min)	--	30-35*
Tack free time (min)	--	50-60*
Pedestrian traffic time (hr)	--	3-4 *
Full cure time (day)	--	7*
Min. recoat time (hr)	--	2*
Max. recoat time (hr)	--	24*
Tensile strength (MPa)	ASTM D638	>30
Elongation at break (%)	ASTM D638	4-6
Hardness (Shore D)	ASTM D2240	65-70
Abrasion resistance (mg)	EN ISO 5470-1	<15 (H22, 1000 cycle)

*Drying time is temperature, humidity and film thickness dependent.



FEATURES

Excellent color stability and gloss retention. Excellent UV light resistance. Long working and gel time. Fast reactivity and cure time (applicable to pedestrian traffic after 3-4 hours). Rapid return to service (return to service in 24 hours). Easy application and spreading. Excellent adhesion to concrete and metal substrates. High abrasion, impact and corrosion resistance. Excellent chemical resistance. Resistant to chlorine and saltwater. High hydrolysis resistance. Perfect thermal stability. Available in transparent and several RAL colours.



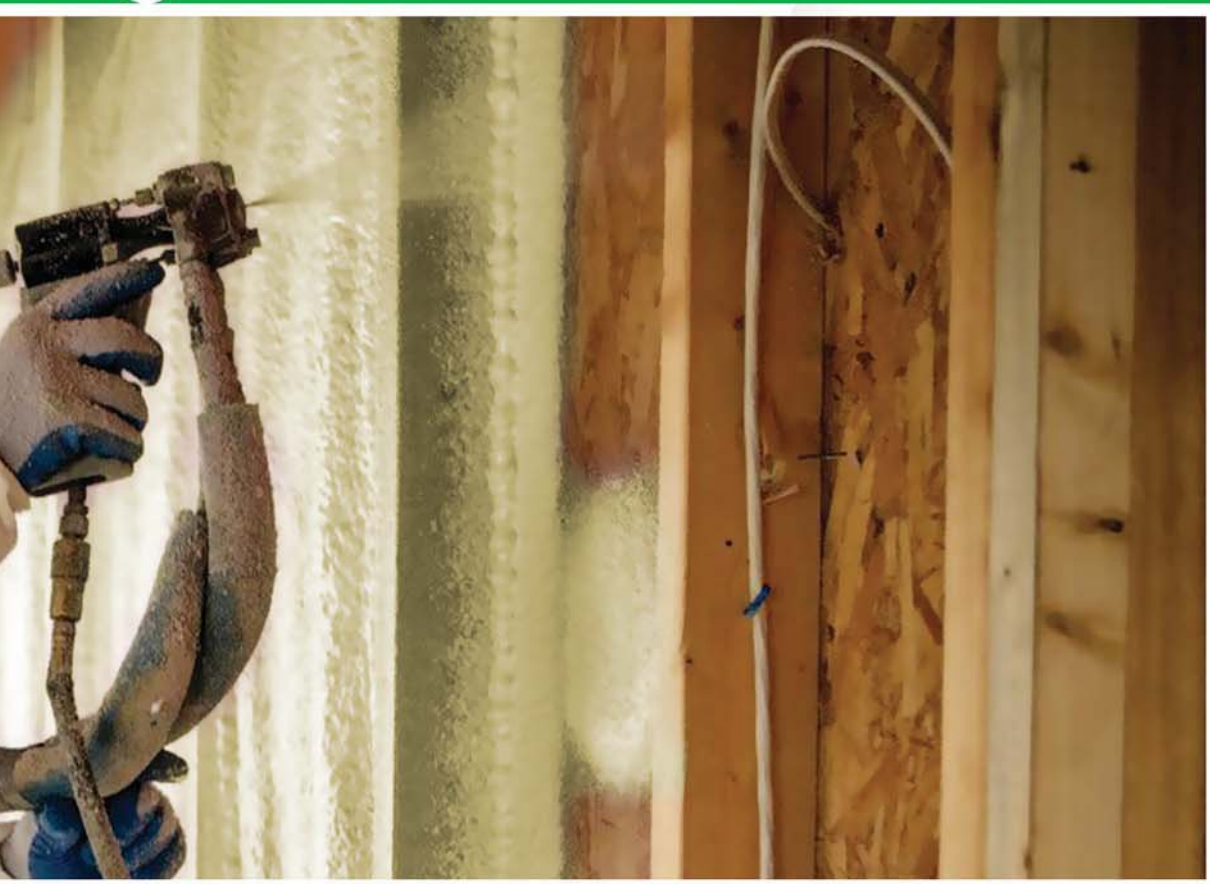
APPLICATION AREAS

As top layer over polyurea coatings where UV resistance and color stability is required. Clear sealer over decorative concrete surfaces. Swimming pools, terraces and garage floors. Industrial and commercial flooring. Restaurant and hospital flooring. Water parks, amusement parks and decorative applications. Aircraft hangers. Deck coatings. Wind energy plants.

RIGID **PU FOAMS**



www.Akfix.com





2K SPRAY FOAM

2K polyurethane foam system which is designed for spray applications. The material must be applied with a high pressure plural component spray polyurethane machine. Mobile application of system has advantages in construction site and high building applications. Because of spray and on-site application, it takes the shape of the surface and because of that property it can be applied any type of area and surface.



TECHNICAL FEATURES

CHEMICAL- PHYSICAL CHARACTERISTICS

	Unit	Polyol Blend	Isocyanate
OH Value	MgKOH/g	260-280	
NCO Content	%		30-31
Viscosity (25 °C)	mPa.s	220-260	220-250
Specific Gravity (20°C)	g/ml	1,12	1,23

TEST VALUES

	Weight Ratio	Volumetric ratio
Polyol blend	100	100
Isocyanate	110	100
	Unit of Meas.	Value
Cream time	sec.	3-4
Gel Time	sec.	6-8
Tack Free Time	sec.	8-10
Density	kg/m ³	29-31

Product Code	Density
SPR 215	14-16 kg/m ³
SPR 225	24-26 kg/m ³
SPR 230	29-31 kg/m ³
SPR 235	34-36 kg/m ³
SPR 240	39-41 kg/m ³



PACKAGE

Product Code	Stock Code	Type	Volume	Box
SPR 215	RFSP215220	Yellowish	470 kg set (250+220kg)	1
SPR 225	RFSP225220	Yellowish	470 kg set (250+220kg)	1
SPR 230	RFSP230220	Yellowish	470 kg set (250+220kg)	1
SPR 235	RFSP235220	Yellowish	470 kg set (250+220kg)	1
SPR 240	RFSP240220	Yellowish	470 kg set (250+220kg)	1



FEATURES

Its main application areas are; poultry farms, cold storage tanks, terraces, roofs, basement ground floors, ceilings, external walls insulation, ground insulation.



APPLICATION AREAS

Generally application is done with 25-50 kg/m³ density polyurethane systems. Since it prevents bacteria growth and it is approved for food contact, specially can be applied for food storage tank insulation and animal shelters. Based on DIN 4102-1 standard can be classified as B2 fire resistance class.





SLR 230/235/240

AKFIX SLR 230 / 235 / 240 is a polyol mixture that contains catalyst, blowing agent and additives. It is used for solar water heater and boiler insulation. Because of its excellent bonding strength, it can adhere to metal with no adhesive.



TECHNICAL FEATURES

CHEMICAL- PHYSICAL CHARACTERISTICS

	Unit	Polyol	Isocyanate
Colour	-	Amber	Dark Brown
Viscosity (25 °C)	mPa.s	600±150	150-260
Specific Gravity (25°C)	g/ml	1,13±0,01	1,24±0,01

TEST VALUES

	Weight Ratio	Volumetric ratio
Polyol blend	100	100
Isocyanate	110	100
	Unit of Meas.	Value
Cream time	sec.	20-25
Gel Time	sec.	80-100
Tack Free Time	sec.	110-130
Density	kg/m ³	29-31

Product Code	Density
SLR 230	29-31 kg/m ³
SLR 235	34-36 kg/m ³
SLR 240	39-41 kg/m ³



PACKAGE

Stock Code	Type	Color	Volume	Box
RFSL230220	AKFIX SLR 230	Yellowish	470 kg set (250+220kg)	1
RFSL235220	AKFIX SLR 235	Yellowish	470 kg set (250+220kg)	1
RFSL240220	AKFIX SLR 240	Yellowish	470 kg set (250+220kg)	1



FEATURES

- B2 fire class
- Closed cell structure
- High adhesion strength for metal surface
- Free rise density choice between 30 kg/m³ - 40 kg/m³
- No thermal bridge, seamless
- Have lowest value than other materials



APPLICATION AREAS

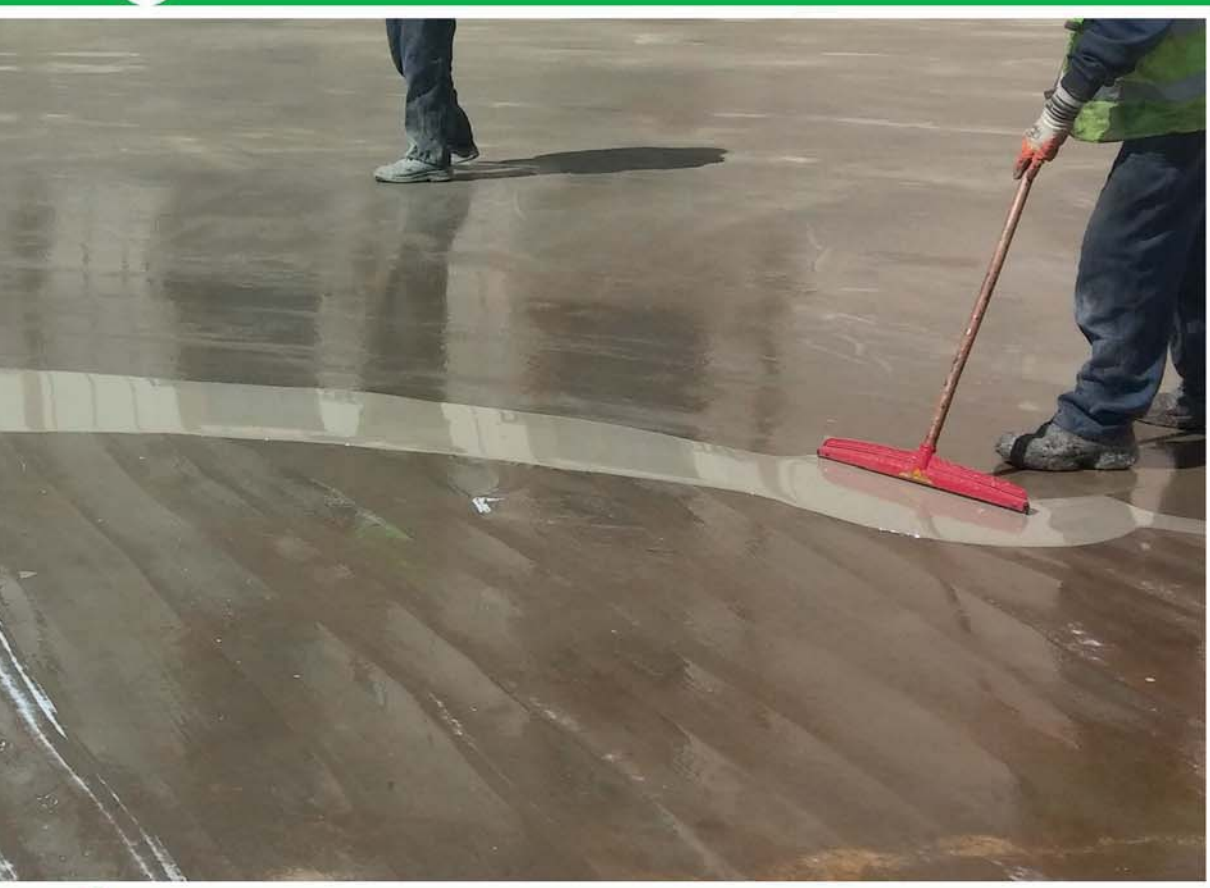
- Hot water tank of solar energy system
- Boiler



PRIMERS



www.Akfix.com



PUR PRIMER 90 TRANSPARENT



FEATURES

- Excellent adhesion to absorbent surfaces.
- Highly elastic to meet surface movements.
- Easy application (by roller or airless gun).
- Resistant to accumulated water and frost.
- Economical.



APPLICATION AREAS

It can be used as a primer especially for concrete surfaces before application of polyurethane based waterproofing membranes and sealants like Akfix 450



AVAILABLE SIZES

Package : 15kg

PRIMER 80 MOISTURE TOLERANT EPOXY PRIMER



FEATURES

- Excellent adhesion to damp concrete surfaces.
- Easy application
- Perfect resistance to water, freeze, humidity and harsh weather conditions.
- Can be used indoor and outdoor applications.
- Economical.



APPLICATION AREAS

It can be used before polyurea, polyurethane and epoxy coating applications for humidity and water vapor prevention on damp concrete surfaces.

- To avoid osmosis bubbles that formed via the effect of the pressure from the negative side.



AVAILABLE SIZES

Component A : 15 kg
Component B : 5 kg

PRIMER S80 STANDARD EPOXY PRIMER



FEATURES

- Excellent adhesion to damp concrete surfaces.
- Easy application
- Perfect resistance to water, freeze, humidity and harsh weather conditions.
- Can be used indoor and outdoor applications.
- Economical



APPLICATION AREAS

It can be used before polyurea, polyurethane and epoxy coating applications for humidity and water vapor prevention on damp concrete surfaces.

- To avoid osmosis bubbles that formed via the effect of the pressure from the negative side.



AVAILABLE SIZES

Component A : 15 kg
Component B : 5 kg

PRIMER M80 EPOXY PRIMER FOR METAL



FEATURES

- Excellent adhesion to metal surfaces
- Protect metal from corrosion
- Resistant to acids, bases, oils, gasoline, solvents and salt water
- Perfect resistance to water, freeze, humidity and harsh weather conditions
- Easy application
- Can be used indoor and outdoor applications
- Long working time and pot life



APPLICATION AREAS

Akfix Primer M80 designed as an anticorrosive & anti-rusting primer on iron and steel substrates prior to the application of waterproofing membranes and coatings.

- Application examples include protection of silos, steel bridges, fences, metals roofs, pipes, reinforcement bars etc.



AVAILABLE SIZES

Component A : 15 kg
Component B : 3 kg

PRIMER T80 TRANSPARENT EPOXY PRIMER



FEATURES

- Low viscosity for maximum penetration
- UV stable, can be used outdoor applications
- Easy application
- VOC free and low odor
- Excellent adhesion to common substrate materials
- Excellent bonding for polyurea, epoxy and polyurethane coating finishes
- Seals pores and capillaries



APPLICATION AREAS

- Primer coat for decorative resinous flooring systems
- Clear may be used as a primer coat over dyed or stained concrete
- General purpose primer for subsequent finish of coating products and flooring installation.
- Can be used either as a coating or filled with paint chips, marble chips and colored chips to provide color schemes or patterns



AVAILABLE SIZES

Component A : 8kg
Component B : 4 kg

PRIMER W80 WATERBASED EPOXY PRIMER



FEATURES

- Low viscosity for maximum penetration
- Easy application
- VOC free and low odor
- Excellent adhesion to common substrate materials
- Barrier properties against moisture and water
- Seals pores and capillaries
- Convenient recoat properties
- Can be used indoor and outdoor applications



APPLICATION AREAS

- Primer before polyurea, polyurethane and epoxy coating applications
- General purpose primer and moisture vapour barrier beneath flooring installation onto porous substrates
- Primer for ceramic tiles
- To avoid osmosis bubbles that formed via the effect of the pressure from the negative side



AVAILABLE SIZES

Component A : 3 kg
Component B : 2 kg

PRIMER WG80 WINTER GRADE EPOXY PRIMER



FEATURES

- Excellent adhesion to damp concrete surfaces.
- Easy application
- Perfect resistance to water, freeze, humidity and harsh weather conditions.
- Can be used indoor and outdoor applications.
- Economical



APPLICATION AREAS

- It can be used before polyurea, polyurethane and epoxy coating applications for humidity and water vapor prevention on damp concrete surfaces.
- To avoid osmosis bubbles that formed via the effect of the pressure from the negative side.



AVAILABLE SIZES

Component A : 11 kg
Component B : 5 kg

PRIMER EP80 EMPRENHE EPOXY PRIMER



FEATURES

- Low viscosity
- High penetration ability
- Ideal surface penetration before coating
- Low viscosity



APPLICATION AREAS

- Impregnation primer that fill capillary pores on concrete surfaces
- Surface preparation primer for epoxy, polyurethane and polyurea floor coverings



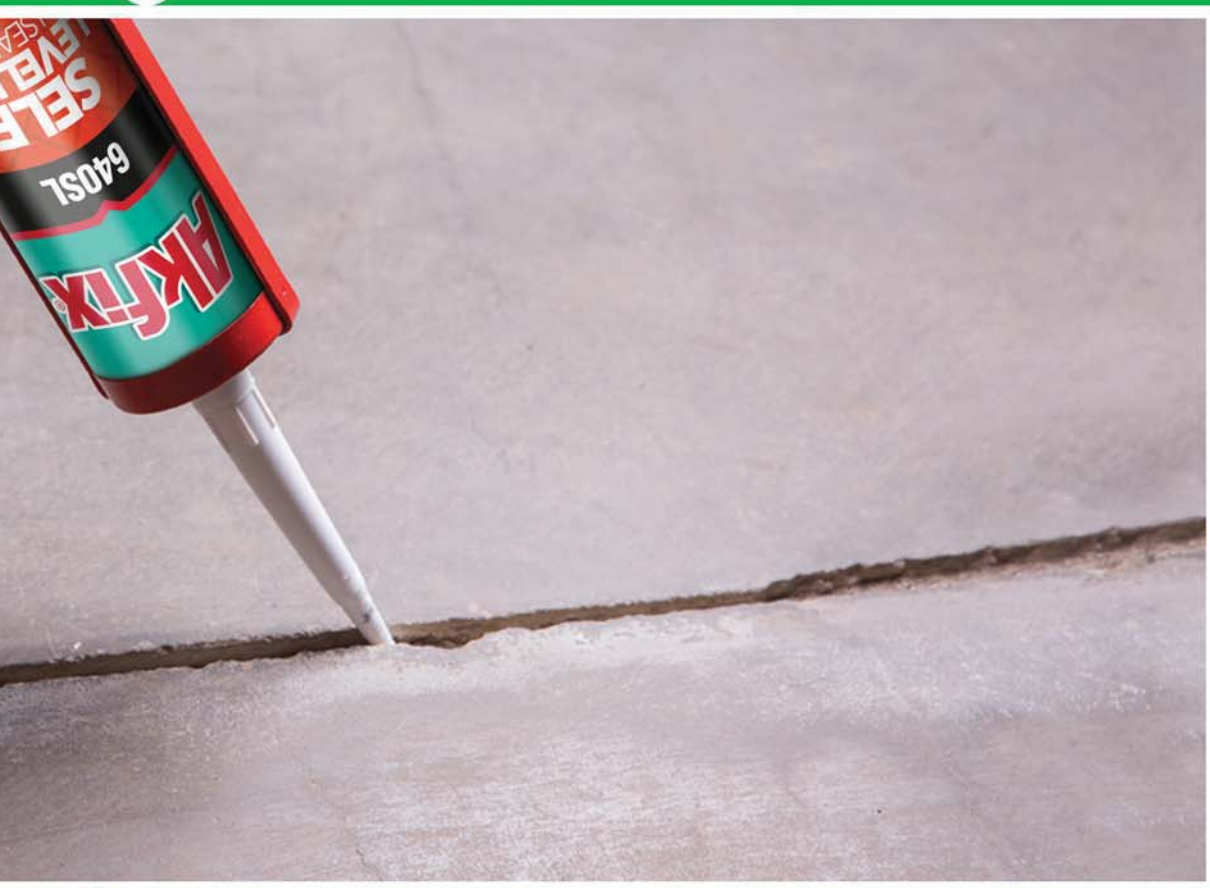
AVAILABLE SIZES

Component A : 21 kg
Component B : 3 kg



JOINT SEALANT & REPAIR

www.Akfix.com



P625 POLYURETHANE SEALANT CONSTRUCTION



One-component, low-modulus polyurethane sealant that cures on exposure to atmospheric humidity. It possesses excellent adhesion to all typical construction materials such as cement based materials, brick, ceramic, glass, wood, galvanized and painted sheet iron and various plastics.



TECHNICAL FEATURES

BEFORE CURING

Basis	: Polyurethane
Consistency	: Thixotropic
Curing Mechanism	: Moisture Curing
Density	: 1,20±0,03 g/ml
Tack free time	: 30-60 min (23°C and 50% R.H)
Curing Rate	: Min. 2 mm/ day (23°C and 50% R.H)
Sagging	: 0 mm (EN ISO 7390)
Temperature Resistance	: -40°C to +70°C
Application Temperature	: +5°C to +40°C

AFTER CURING

Hardness Shore A	: 25-30 After 28 days
Paintability	: Yes *
Elastic Recovery	: ≥ 70% (ISO 7389)
Movement Capability	: 25 %

Glass-Glass

Elongation at break	: min.120% (ISO8339)
E100 Modulus (23 °C)	: 0.30-0.40 N/mm ² (ISO8339)
E100 Modulus (-20 °C)	: ≤ 0,60 N/mm ² (ISO8339)

DUMBLE TEST

Elongation at break	: ≥700
Tensile Strength	: 1.0-1.5 N/mm ²



FEATURES

Possesses permanent elasticity. No sagging - Thixotropic. No surface tackiness after full cure. Do not pick up dirt. No shrinkage. Enhanced storage stability. Can be applied with hand gun and tooled easily. Paintable. Cures bubble-free. 25% movement capability. Conforms to BS 6920 for the metallic water soluble impurities. Conforms to the requirements of VOC content specifications in LEED credit EQc4.1 "Low-emitting products" of SCAQMD rule 1168.

APPLICATION AREAS

Expansion joints between many different construction materials. Bonding of roof tiles. Installation of PVC window frames. Connection joints between wood window- and doorframes and walls. Joints between prefabricated construction materials. Sealing and bonding of ventilation ducts, gutters and spouts etc. For expansion joints between pre-cast concrete panels.

P635 POLYURETHANE SEALANT CONSTRUCTION



One-component, low-modulus polyurethane sealant that cures on exposure to atmospheric humidity. It possesses excellent adhesion to all typical construction materials such as cement based materials, brick, ceramic, glass, wood, galvanized and painted sheet iron and various plastics.



TECHNICAL FEATURES

BEFORE CURING

Basis	: Polyurethane
Consistency	: Thixotropic
Curing Mechanism	: Moisture Curing
Density	: 1,20±0,03 g/ml
Tack free time	: 30-70 min. (23°C and 50% R.H)
Curing Rate	: Min. 2,5 mm/day (23°C and 50% R.H)
Sagging	: 0 mm (EN ISO 7390)
Temperature Resistance	: -40°C to +90°C
Application Temperature	: +5°C to +40°C

AFTER CURING

Hardness Shore A	: 35-40 After 28 days (ASTM C661)
Paintability	: Yes *
Elastic Recovery	: ≥ 70% (ISO 7389)

Glass-Glass

Elongation at break	: ≥ 100% (ISO8339)
E100 Modulus (23 °C)	: 0.35-0.40 N/mm ² (ISO8339)
E100 Modulus (-20 °C)	: ≤ 0,60 N/mm ² (ISO8339)

DUMBLE TEST

Elongation at break	: ≥600 (ASTM D412)
Tensile Strength	: 1.5-2.0 N/mm ² (ASTM D412)



FEATURES

Possesses permanent elasticity. No sagging - Thixotropic. No surface tackiness after full cure. Do not pick up dirt. No shrinkage. Enhanced storage stability. Can be applied with hand gun and tooled easily. Paintable. Cures bubble-free. 25% movement capability. Conforms to BS 6920 for the metallic water soluble impurities. Conforms to the requirements of VOC content specifications in LEED credit EQc4.1 "Low-emitting products" of SCAQMD rule 1168.

APPLICATION AREAS

Expansion joints between many different construction materials. Movement and connection joints in floors. Indoor and outdoor applications for pedestrian and traffic areas. Joints between prefabricated construction materials. Sealing and bonding of ventilation ducts, gutters and spouts etc. For expansion joints between pre-cast concrete panels. Meets the requirements of ISO 11600 F 25 LM.

UNIVERSAL AST POLYMER



High quality universal hybrid sealant & adhesive based on AST polymer.

SHORE A45

ALL MATERIALS &
ALL SURFACES



TECHNICAL FEATURES

Chemical Base	: AST Polymer
Curing System	: Moisture
Density	: 1.40 ± 0.03 gr/ml
Appearance/Color	: Paste, White, Black and Grey
Tack Free	: Approx. 50 min (23°C and %50 R.H.)
Curing Rate	: Approx. 2.5 mm/ 24 hr (23°C and %50 R.H.)
Sagging (ISO 7390)	: 0 mm
E100 Modulus (ISO 8339)	: < 0,4 N/mm ²
Shore A Hardness (ISO 868)	: 45 ±5
Elongation at Break % (ISO 37)	: ≥ % 120
Volume Loss	: < -%3 (23°C and %50 R.H.)
Tensile Strength (ISO 37)	: 1,5 – 2,0 N/mm ²
Heat Resistance	: -40°C and +90°C
Application Temperature	: +5°C and +40°C



"Conforms to the requirements of VOC content specifications in LEED credit EQc4.1 "Low-emitting products" of SCAQMD rule 1168."



FEATURES

Highly thixotropic: Suitable for horizontal and vertical joints. Eco-friendly, free from isocyanate, solvent, acids and halogens. Excellent primerless adhesion to numerous porous and non-porous substrates. No bubble formation, even in wet and humid conditions. Very good UV resistance. Over-paintable with water based paints. No shrinkage.



APPLICATION AREAS

Connection joints in sheet metal fabrication, sealing of HVAC systems. Elastic bonding in vibrating construction elements. Sealing of floor joints and low movement wall joints. Sealing joints in containers, cisterns, silos etc.

640SL SELF LEVELING PU SEALANT



One-component self-leveling polyurethane sealant ideal for horizontal applications. Its elasticity allows it to absorb continual movements of the structure caused by thermal changes without problems of cracking.



TECHNICAL FEATURES

BEFORE CURING

Basis	: Polyurethane
Consistency	: Self-leveling
Curing Mechanism	: Moisture Curing
Density	: 1,17±0,03 g/ml
Tack free time	: Approx. 60 min (23°C and 50% R.H.)
Curing Rate	: Min. 2,00 mm/days (23°C and 50% R.H.)
Application Temperature	: +5°C to +35°C

AFTER CURING

Hardness Shore A	: 20-25 ISO 868 (After 28 days)
Paintability	: Yes *
Elastic Recovery	: ≥ 70% ISO 7389
Movement Capability	: 25 %
Elongation at break	: ≥%500 ASTMD412
Tensile Strength	: 0,75-1.5 N/mm ² ASTMD412



FEATURES

One component, no mixing required. Self-leveling consistency, easy to apply in horizontal joints. Possesses permanent elasticity. High adhesion strength. Capable of ±25% joint movement. Paintable.



APPLICATION AREAS

Used for sealing of horizontal joints. Interior and exterior areas. Expansion joints between many different construction materials. Control joints. Industrial floors. Driveways/Garages, sidewalks, decks.

PU DF25 2K POLYURETHANE DILATATION FILLER



Self-leveling polyurethane sealant ideal for horizontal applications. Its elasticity allows it to absorb continual movements of the structure caused by thermal changes without problems of cracking.



TECHNICAL FEATURES

BEFORE MIXING

Component A (Base)	
Consistency	: Paste
Density	: 1.55±0.02 g/ml
Color	: White
Component B (Curing Agent)	
Consistency	: Liquid
Density	: 1.00±0.01 g/ml
Color	: Black

AFTER MIXING-CURING

Mixing Ratio	: 2:1 A:B (by weight)
Basis	: Polyurethane
Colour	: Grey
Consistency	: Self-leveling
Density	: 1.35±0.02
Tack free time	: 60 min. (23°C %50 R.H)
Curing Rate	: min. 3 mm/day (23°C %50 R.H)
Elongation at Break	: ≥250% (ASTM D412)
Tensile Strength	: 0,75-1,0 N/mm² (ASTM D412)
Shore A - Hardness	: 25±5 After 28 days (ASTM C661)
Paintable	: Yes*
Application Temperature	: +5°C to +35°C



FEATURES

Two component. Easy to mix. Fast cure. Self-leveling consistency, easy to apply in horizontal joints. Possesses permanent elasticity. High adhesion strength. Capable of ±25% joint movement. Paintable.



APPLICATION AREAS

Used for sealing of horizontal joints. Interior and exterior. Expansion joints between many different construction materials. Industrial floors. Driveways/ Garages. Sidewalks.

JH1070/JH1080 POLYUREA JOINT SEALANTS



Self-leveling, 100% solid, flexible, two component, 1:1 volumetric ratio, rapid curing polyurea elastomer joint and crack filler. Cures rapidly and consistently in applications ranging from -10°C to 50°C. Applications can be reopened to vehicle or foot traffic in 1 hour. Recommended time of cure of concrete minimum 30 days prior to installing joint filler or joint sealant.



FEATURES

100% solid, VOC free, no solvents. Fast reactivity. Returns project to service in 60 Minutes. Temperature and moisture insensitivity. Excellent thermal stability. Very good tensile and structural strength. Resistant to petrochemicals and chemicals.



APPLICATION AREAS

Concrete crack repair and joint filler on; Airports. Roofs. Parking lots and garages. Industrial facilities. Warehouse floors. Manufacturing facilities. Bottling and canning facilities. Food processing facilities. Cold storage facilities.



TECHNICAL FEATURES

JH 1070

	Method	Datas
Chemical structure		Isocyanate (MDI) Prepolymer Amine Resin
VOC content (%)	ASTM D-1259	0
Solid content (%)	ASTM D-2697	100
Gel time (min)	--	1-15
Tack free time (min)	--	3-5
Recoat time (hr)	--	0-12 (without pretreatment)
Post cure time (hr)	--	24
Density (gr/cm³)	ASTM D-792	0,99-1,03
Tensile strength (MPa)	ASTM D638	≥5
Elongation at break (%)	ASTM D638	≥250
Hardness (Shore A)	ASTM D2240	70-75
Pull off strength (N/mm²)	ASTM D 4541	concrete: ≥2 steel : ≥5

JH 1080

	Method	Datas
Chemical structure		MDI Prepolymer Amine Resin
VOC content (%)	ASTM D-1259	0
Solid content (%)	ASTM D-2697	100
Gel time (min)	--	1-15
Tack free time (min)	--	3-5
Recoat time (hr)	--	0-12 (without pretreatment)
Post cure time (hr)	--	24
Density (gr/cm³)	ASTM D-792	0,99-1,03
Tensile strength (MPa)	ASTM D638	≥9
Elongation at break (%)	ASTM D638	≥200
Hardness (Shore A)	ASTM D2240	80-88
Pull off strength (N/mm²)	ASTM D 4541	concrete: ≥2 steel : ≥5

POLYUREA HM 80 HANDMIX POLYUREA



Akfix HM 80 is a superior hand mixable, self leveling, flexible, two component polyurea product with a retarded pot life. It is a high quality joint filler, coating and crack repair material in applications that are time critical. It works well in adverse temperature conditions and the application can be reopened to foot traffic in one hour. The product is ideal for use in cold storage facilities, freezers, and food processing plants where time and temperature are serious concerns.



TECHNICAL FEATURES

Chemical structure	Method	Datas
	Iso component: Isocyanate (MDI) Prepolymer (A)	
	Amine component: Amine Resin (B)	
VOC content (%)	ASTM D-1259	0
Solid content (%)	ASTM D-2697	100
Gel time (min)	--	7-8
Tack free time (min)	--	10-11
Density (gr/cm3)	ASTM D-792	0,99-1,03
Tensile strength (MPa)	ASTM D638	≥15
Elongation (%)	ASTM D638	≥350
Hardness (Shore A)	ASTM D2240	85-90
Pull off strength (N/mm2)	ASTM D 4541	concrete: ≥2 steel : ≥5



FEATURES

100% solid, VOC free, no solvents. Hand mixable and applicable. Fast reactivity. Return project to service in 60 minutes. Non sensitivity to temperature and humidity. Remains flexible in cold temperatures. Very good tensile and structural strength. Resistant to petrochemicals and chemicals.



APPLICATION AREAS

Small repairs on existing polyurea. Concrete crack and repair. Concrete joint filler. As a floor coating on various places like. Airports. Parking lots and garages. Industrial facilities. Warehouse floors. Manufacturing facilities. Food processing facilities. Cold storage facilities.

602 BITUM SEALANT



Solvent-based plasto-elastic bituminous sealant, reinforced by fibres, for gluing and reparations on bituminous surfaces. After curing a permanent flexible mass is formed.



TECHNICAL FEATURES

Basis	: Bitum
Curing System	: Neutral, physical drying
Density	: 1.25± 0.02 g/ml (ASTM D 792)
Skin formation	: 30 min. (23°C and 50% R.H)
Curing Rate	: 0,5-1 mm/day (23°C and 50% R.H)
Consumption	: 450 g/m ²
Application Temperature	: +1°C to +30°C



FEATURES

Immediate and permanent adhesion on all common construction materials (such as brick, concrete, lead, zinc, tiles, isolation panels, certain plastics, etc...) Can be applied under humid conditions. It is thixotropic and therefore cannot drip, flow or spill and makes no threads. Free from asbestos. Remains flexible after processing and vulcanization. Resistant to moisture. Economic in use. Inflammable (when used properly). Highly insulating. Protects against rust and moisture.



APPLICATION AREAS

Waterproof sealing of joints, seams, chimneys, ventilation tubes, drainpipes, etc. Adhesive for synthetic materials, tiles, concrete, rubber, insulating panels etc. Sealing seams in wooden ships or boats.

907N EPDM ADHESIVE SEALANT



One component, neutral curing, high performance silicone sealant specially developed for bonding and sealing of EPDM sheets.



TECHNICAL FEATURES

Basis	: Silicone Polymer(Oxime)
Curing System	: Neutral
Density	: 1.20± 0.03 g/ml (ASTM D 792)
Hardness Shore A	: 25±5 (after 28 days)
Tensile Strength	: ≤ 0,4 N/mm ² (23°C and 50% R.H) (ISO 8339)
Skin formation	: 5-10 min. (23°C and 50% R.H)
Curing Rate	: Min. 2,5 mm/day (23°C and 50% R.H)
Elongation At Break	: ≥ 350%
Elastic Recovery	: Approx. 100% (ISO 7389)
Sagging	: 0 mm (ISO 7390)
Yield	: Approx. 12 meters (600 mL) for 0.64 cm bead size
Temperature Resistance	: -60°C to +180°C
Application Temperature	: +5°C to +40°C



FEATURES

Moisture curing. Very good adhesion on porous and nonporous surfaces including EPDM. Resistance to weather conditions. Fast curing. High elasticity. %100 Silicone, solventless



APPLICATION AREAS

Bonding of EPDM sheets to each other. Sealing between EPDM sheets and many different building surfaces.

REM301 EPOXY REPAIR MORTAR



Epoxy repair mortar; It is an epoxy based, two component, solventless, high impact and compression resistance, high abrasion resistant repair and mounting mortar. It has excellent adhesion force to concrete and steel. Due to its special formulation, it has a thixotropic structure that does not flow on vertical floors.



TECHNICAL FEATURES

Chemical Structure	: A : Epoxy resin	B: Epoxy hardener
Colour	: Grey	
Mix ratio (by weight)	: 3:1 (A/B)	
Solid ratio	: 100 %	
Mixture density	: 1,68 gr/cm ³	
Compression Strength	1 gün	: >40 N/mm ²
	7 gün	: >85 N/mm ²
Flexural Strength	1 gün	: >25 N/mm ²
	7 gün	: >30 N/mm ²
Adhesion Strength	Concrete	: >3 N/mm ²
	Steel	: >3,5 N/mm ²
Pot Life	: 50 min. (23°C and %50 R.H.)	
Foot Traffic	: 24 hrs. (23°C and %50 R.H.)	
Total Curing	: 7 days (23°C and %50 R.H.)	
Application Thickness	: Min : 0,5 mm. Max: 50 mm	
Application Temperature	: +10 °C ve +30 °C	



FEATURES

Excellent adhesion force to concrete and steel. Does not contain solvent. High abrasion and impact resistance. High mechanical and chemical resistance. Can be applied without primer.

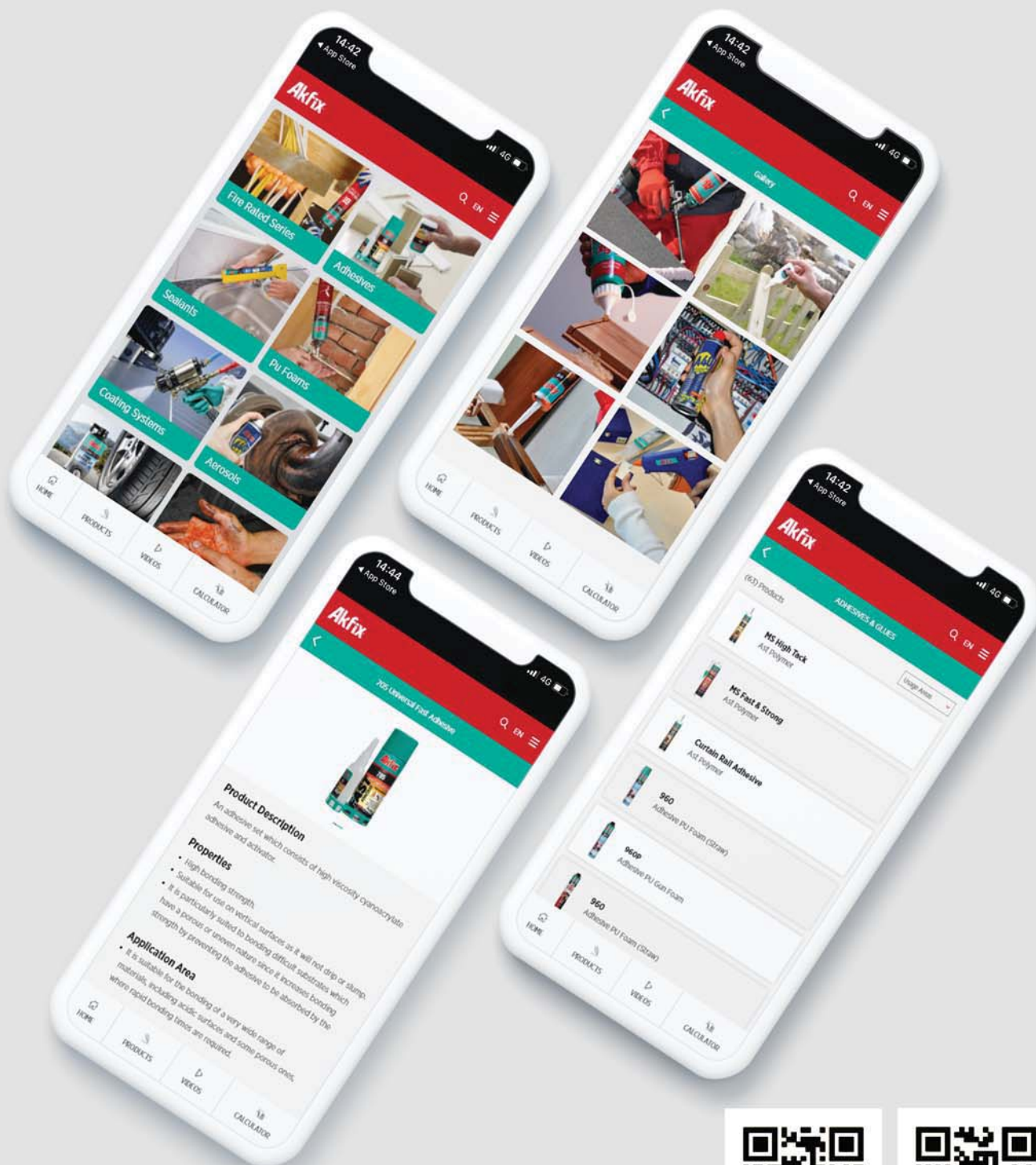


APPLICATION AREAS

Industrial floors. Airport concrete runways. Repair of highways joints. Maintenance and repair marine structures. To fill gaps between the bridge supports and concrete columns with steel reinforcement. Surface repair before coating applications. Filling and repair of concrete building elements.



7/24 Pocket Catalog!



Download on the Google Play & App Store





Coatings

*Waterproofing and
Heat Insulation
Systems*

www.Akfix.com

    /Akfixsealants

